



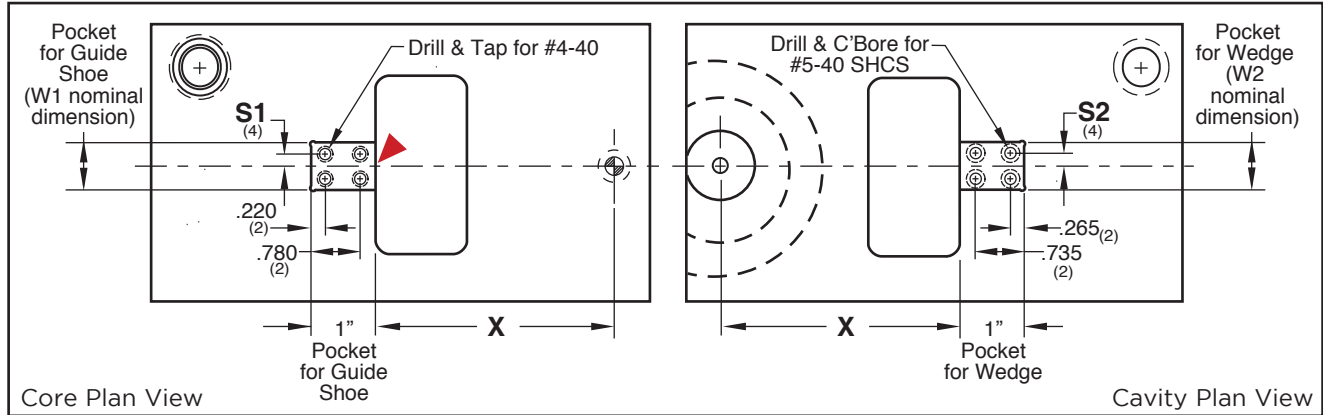
VERSA-SLIDE 10 SERIES



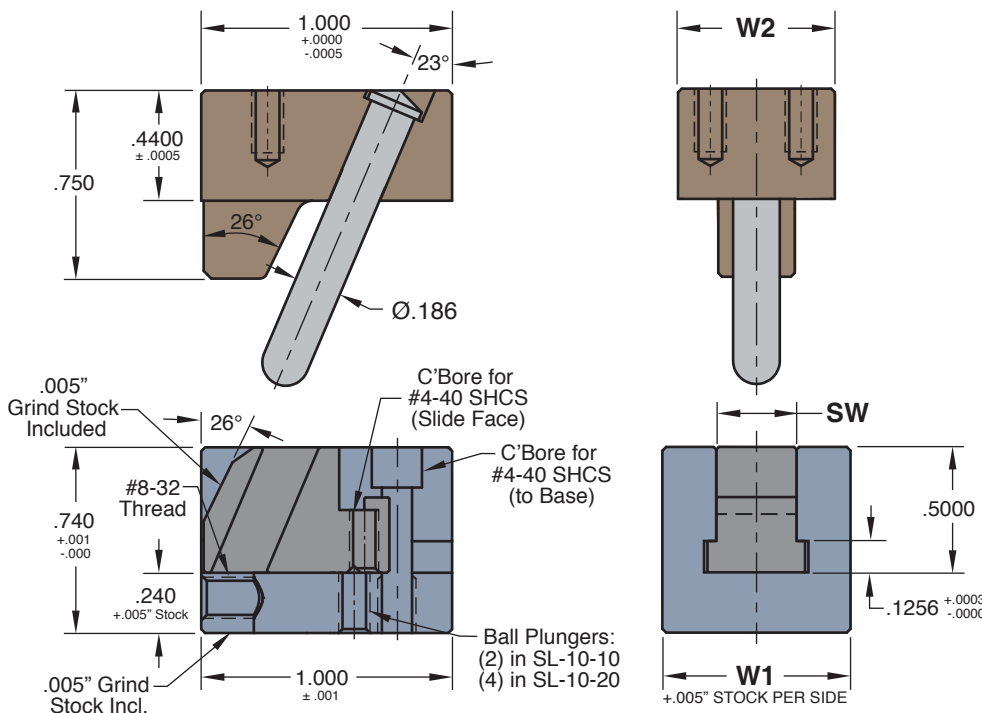
APPLICATION GUIDELINES

- Travel = .250"
- Slide Faces are sold separately on page G-23.
- Machine pockets from the common location "X" to the dimensions shown in the chart and graphics below.
- High temperature assemblies include Ball Plungers capable of reaching 600°F (315°C). Specify "-HT" at the end of the catalog number.

▶ CAD insertion point



Versa-Slide Part Dimensions



Assemblies include:

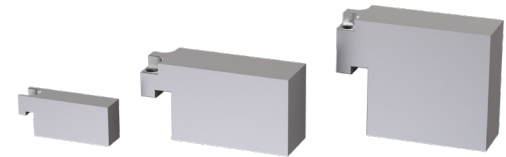
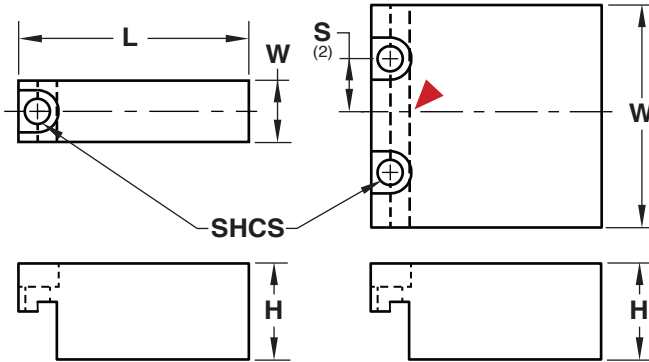
- All machined components with grind stock as noted.
- Ball Plungers (2 or 4)
- CP-10-A (1) Cam Pin, finished.
- Screws are included:
 - #4-40 SHCS (4) installed in the Guide Shoe through to the mold base.
 - #4-40 (1 or 2) SHCS for attachment of the Slide Face or manufactured slides.
 - #8-32 LHCS (1) for an optional positive slide stop in the back of the Wear Plate.

CATALOG NUMBER	SW +.0000 -.0003	W1 +.005/S GRIND STOCK	W2 +.000 -.002	S1 ±.01	S2 ±.01
SL-10-10	.320	.750	.625	.280	.205
SL-10-20	1.320	1.750	1.750	.780	.768



VERSA-SLIDE

SLIDE FACES: 10 & 20 SERIES



M P-20 **H** 28-32 HRC

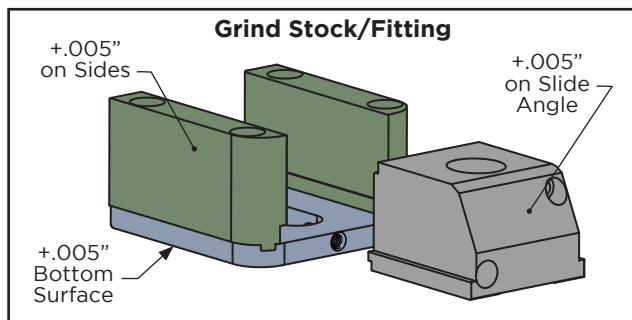
CAD insertion point

CATALOG NUMBER	H ±.0005	W +.0000 -.0003	L +.005 -.000	SHCS	S1 ±.01	FOR USE WITH SLIDE ASSEMBLY
SLF-10100	.5000	.3200	1.200	#4-40	—	SL-10-10
SLF-10101		1.3200			.375	SL-10-20
SLF-20101	.4600	.6250	1.900	#5-40	.205	SL-20-10
SLF-20102	.9600					SL-20-20
SLF-20103	1.3900					SL-20-30

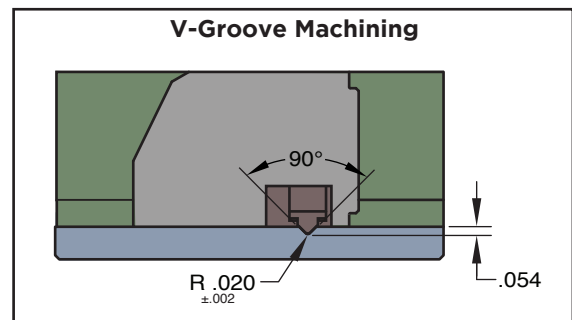
APPLICATION GUIDELINES

- The 10 & 20 Series Slide Faces are finished ground; no additional machining or fitting is required.

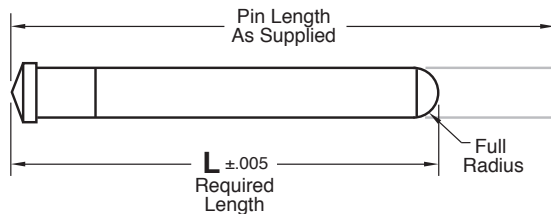
MACHINING GUIDELINES



- Grind stock is included on the Guides and bottom of the Wear Plates. Machine to fit the pockets to the W1 dimensions shown on the individual series pages.
- For the Slide, grind stock is included on the back to allow for adjustment with the mating Wedge.
- The width of the Wear Plate is undersized to fit into the pocket.



- Machine V-Groove in the top of the Wear Plates to accept the Slide Lock in all Versa-Slide assemblies 25 Series and larger.
- For the 20 Series assemblies, machine the V-Groove in the bottom of the Slide.



CAM PINS

- CP-20 (3/8 diameter) and CP-30 (1/2 diameter) Cam Pins are to be machined on the length by the mold maker to accommodate the final travel requirement.
- Mold-Ready Cam Pins are available as shown below.

STANDARD CAM PIN CATALOG NUMBER	PIN LENGTH AS SUPPLIED
CP-20	6.03
CP-30	7.05

To Order Mold-Ready Cam Pins:

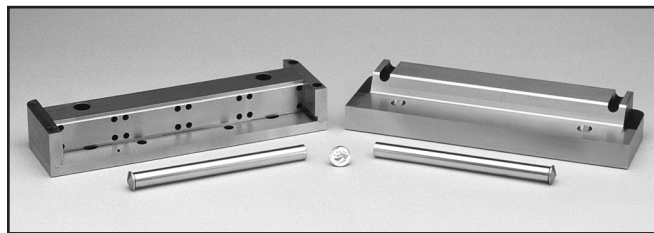
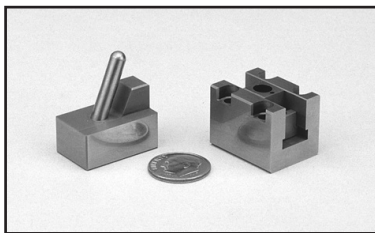
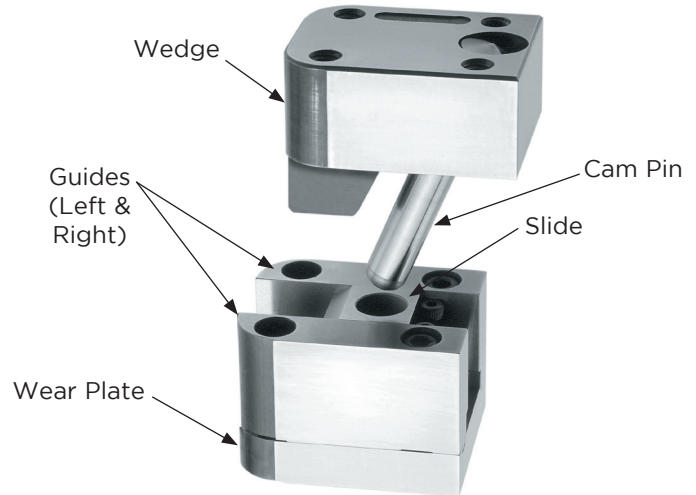
- Specify the size of the pin (CP-20 or CP-30) and the length required.
- Example: CP-30 L6.244 is a 1/2" diameter Cam Pin machined to 6.244" long with a full radius. Longer-than-standard lengths can also be quoted.
- Submit an email to tech@procomps.com with the quantity required.

VERSA-SLIDE® SELECTION GUIDE

Progressive's Versa-Slide assemblies, a product line acquired from Omni Mold Systems®, offer a range of pre-engineered, off-the-shelf side actions.

- Wide range of sizes and travels.
- Slide Faces are available for all assemblies, sold separately.
- For application assistance, please contact tech@procomps.com.

PART NAME	MATERIAL
Slide	H-13, 48-50 HRC
Wedge	S-7, 54-56 HRC
Guide Shoe (10 Series) Guides	S-7, 54-56 HRC
Wear Plate	S-7, 54-56 HRC
Cam Pin: CP-10-A Cam Pin: CP-20 & CP-30	H-13, 50-52 HRC H-13, Nitrided to 65-70 HRC



CAM TRAVEL RANGE	OVERALL WIDTH (W) INCLUDING GRIND STOCK	SLIDE WIDTH (SW)	SLIDE HEIGHT (SH)	VERSA-SLIDE SERIES	PAGE NUMBER
.250	.760 - 1.760	.320-1.320	.500	10 Series	G-15
.500 - .600	1.510	.625	.460 - 1.460	20 Series	G-16
.500 - 1.800	2.260	1.375	.640 - 1.640	25 Series	G-17
.500 - 1.800	2.948	2.063	.640 - 1.640	30 Series	G-17
.500 - 1.800	4.073	3.188	.640 - 1.640	40 Series	G-18
.500 - 1.800	5.255	4.375	.640 - 1.640	45 Series	G-19
.500 - 1.800	6.510	5.624	.640 - 1.640	50 Series	G-20 & G-21
.500 - 1.800	8.005	7.124	.640 - 1.640	55 Series	G-20 & G-21
.500 - 1.800	9.635	8.749	.640 - 1.640	60 Series	G-20 & G-21

APPLICATION GUIDELINES

- Select the Versa-Slide based on the detail width and the required travel.
- Refer to individual pages for detailed specifications.
- Slide Faces are sold separately on page G-22.
- Machining instructions can be found on page G-23.