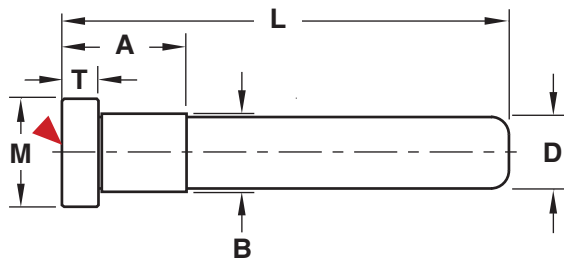


# UNIT INSERT PINS & BUSHINGS

## LEADER PINS



NOMINAL DIAMETER	D +.0000 -.0005	A +.00 -.03	B +.0005 -.0000	M +.00 -.01	T +.000 -.002
1/2	.499	.75	.500	.750	.250
5/8	.624	.87	.625	.865	.250

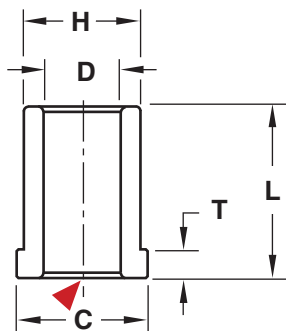
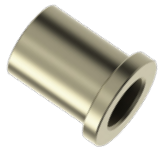
Note: The RLP50L1.25 has an "A" dimension of .62".

**M** AISI 1117 **H** Surface: 58-62 HRC

L	D=1/2"	D=5/8"
1.250	RLP50L1.25	—
1.750	RLP50L1.75	RLP62L1.75
2.000	RLP50L2.00	—
2.250	RLP50L2.25	RLP62L2.25
2.500	RLP50L2.50	RLP62L2.50
3.000	RLP50L3.00	RLP62L3.00
3.500	RLP50L3.50	RLP62L3.50
4.000	—	RLP62L4.00

▶ CAD insertion point

## SHOULDER BUSHINGS



NOMINAL DIAMETER	D +.0008 -.0000	H +.0005 -.0000	C +.000 -.005	T +.000 -.005
1/2	.5000	.7505	.863	.188
5/8	.6250	.8755	1.100	.188

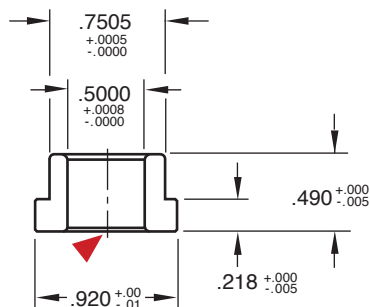
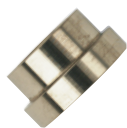
▶ CAD insertion point

**M** CA954 Solid Bronze **H** 170 Brinell

NOMINAL PLATE THICKNESS	L	D=1/2"	D=5/8"
.625	.625	RSB50L.62	—
.875	.875	—	RSB62L.87
1.000	.900	RSB50L1.00	—
1.125	1.125	RSB50L1.12	—
1.250	1.150	—	RSB62L1.25
1.375-S	1.275	RSB50L1.27	RSB62L1.27
1.375	1.375	—	RSB62L1.37
1.500	1.400	RSB50L1.50	RSB62L1.50
1.625	1.625	RSB50L1.62	—
1.875-S	1.775	RSB50L1.87	RSB62L1.77
1.875	1.875	—	RSB62L1.87
2.375	2.275	RSB50L2.37	RSB62L2.37
2.875	2.775	—	RSB62L2.87

Note: The "-S" signifies use with solid unit inserts.

## GUIDE PIN BUSHINGS



**M** CA954 Solid Bronze **H** 170 Brinell

CATALOG NUMBER	DESCRIPTION
RGE50	1/2" ID Guided Ejector Bushing