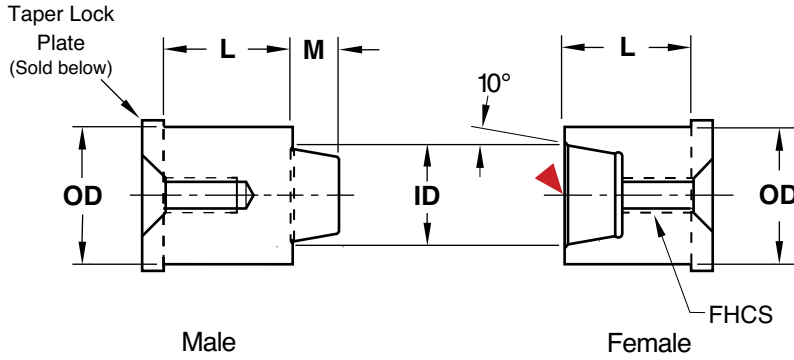




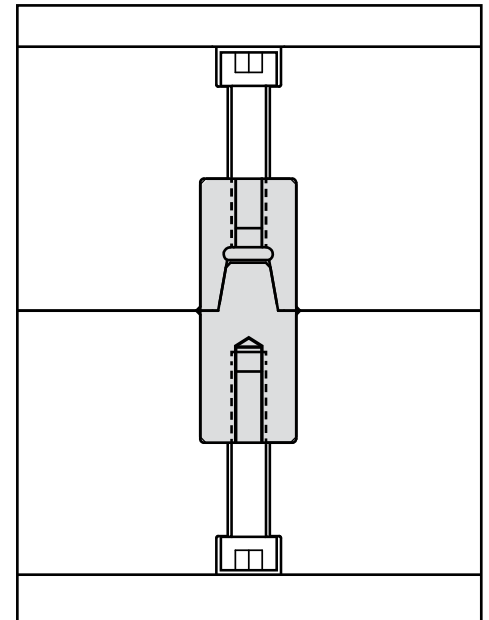
TAPER LOCKS THREADED STYLE



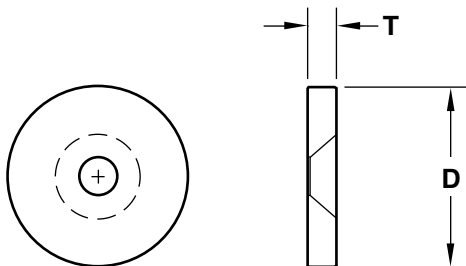
M H-13 **H** 48-52 HRC

▶ CAD insertion point

| O.D. +.0000 -.0003 | I.D. | M | THREAD SIZE | L +.004 +.008 | MALE CATALOG NUMBER | FEMALE CATALOG NUMBER |
|--------------------------|-------|------|----------------|---------------------|---------------------------|-----------------------------|
| .5000 | .312 | .250 | #10-24 | .687 | MTL50L.68 | FTL50L.68 |
| | | | | .875 | MTL50L.87 | FTL50L.87 |
| | | | | 1.187 | MTL50L.118 | FTL50L.118 |
| | | | | 1.375 | MTL50L.137 | FTL50L.137 |
| .7500 | .500 | .281 | 1/4-20 | .687 | MTL75L.68 | FTL75L.68 |
| | | | | .875 | MTL75L.87 | FTL75L.87 |
| | | | | 1.187 | MTL75L.118 | FTL75L.118 |
| | | | | 1.375 | MTL75L.137 | FTL75L.137 |
| 1.000 | .625 | .343 | 1/4-20 | .687 | MTL100L.68 | FTL100L.68 |
| | | | | .875 | MTL100L.87 | FTL100L.87 |
| | | | | 1.187 | MTL100L.118 | FTL100L.118 |
| | | | | 1.375 | MTL100L.137 | FTL100L.137 |
| 1.500 | 1.000 | .500 | 5/16-18 | 1.125 | MTL150L.112 | FTL150L.112 |
| | | | | 1.375 | MTL150L.137 | FTL150L.137 |
| | | | | 1.625 | MTL150L.162 | FTL150L.162 |
| 2.000 | 1.500 | .500 | 5/16-18 | 1.125 | MTL200L.112 | FTL200L.112 |
| | | | | 1.375 | MTL200L.137 | FTL200L.137 |
| | | | | 1.625 | MTL200L.162 | FTL200L.162 |



TAPER LOCK PLATES



M AISI 52100 **H** 57-61 HRC **S** Black Oxide

| CATALOG NUMBER | TAPER LOCK OD | D +.000 -.015 | T +.000 -.002 | FLAT HEAD COUNTERBORE |
|-------------------|---------------------|---------------------|---------------------|--------------------------|
| TLP50 | 1/2 | .687 | .187 | #10-24 |
| TLP75 | 3/4 | 1.000 | .187 | 1/4-20 |
| TLP100 | 1 | 1.187 | .187 | 1/4-20 |
| TLP150 | 1-1/2 | 1.687 | .250 | 5/16-18 |
| TLP200 | 2 | 2.187 | .250 | 5/16-18 |

1/2" long FHCS included.