

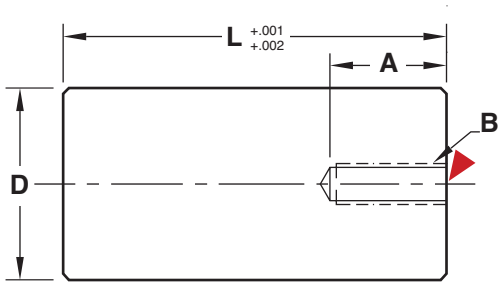
SUPPORT PILLARS



M AISI 1018 **H** 126 Brinell

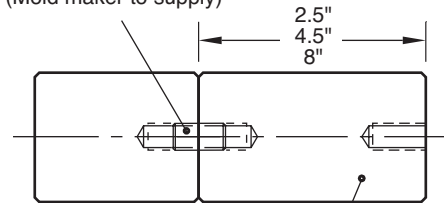
CAD insertion point

Threaded Support Pillars



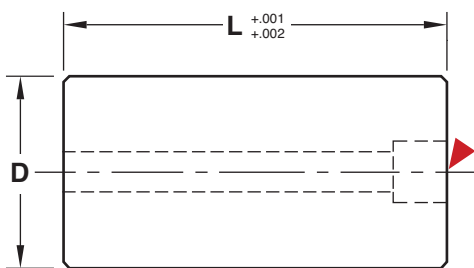
Socket Head Cap Screws are included with all Support Pillars. 1" long screws are used with the Threaded Pillars. Refer to the chart for the Counterbored Pillar screw size.

Optional Set Screw
(Mold maker to supply)



All 2.5", 4.5" and 8" long Threaded Support Pillars are tapped for a set screw enabling a second pillar to be attached as an extension.

Counterbored Support Pillars



D	L	THREADED SUPPORT PILLARS			COUNTERBORED SUPPORT PILLARS			
		CATALOG NUMBER	A	B	CATALOG NUMBER	SHCS		
1	2.5	SP100L2.5	.62	3/8-16	SP100L2.5-CB	3/8-16 x 2.5"		
	3	SP100L3			SP100L3-CB	3/8-16 x 3"		
	3.5	SP100L3.5			SP100L3.5-CB	3/8-16 x 3.5"		
	4	SP100L4			SP100L4-CB	3/8-16 x 4"		
1.25	4.5	SP100L4.5	.62	3/8-16	SP100L4.5-CB	3/8-16 x 4.5"		
	2.5	SP125L2.5			SP125L2.5-CB	3/8-16 x 2.5"		
	3	SP125L3			SP125L3-CB	3/8-16 x 3"		
	3.5	SP125L3.5			SP125L3.5-CB	3/8-16 x 3.5"		
	4	SP125L4			SP125L4-CB	3/8-16 x 4"		
	4.5	SP125L4.5			SP125L4.5-CB	3/8-16 x 4.5"		
1.5	5	SP125L5	.62	3/8-16	SP125L5-CB	3/8-16 x 5"		
	6	SP125L6			SP125L6-CB	3/8-16 x 6"		
	2.5	SP150L2.5			.62	3/8-16	SP150L2.5-CB	3/8-16 x 2.5"
	3	SP150L3					SP150L3-CB	3/8-16 x 3"
	3.5	SP150L3.5					SP150L3.5-CB	3/8-16 x 3.5"
	4	SP150L4					SP150L4-CB	3/8-16 x 4"
	4.5	SP150L4.5					SP150L4.5-CB	3/8-16 x 4.5"
5	SP150L5	SP150L5-CB	3/8-16 x 5"					
6	SP150L6	SP150L6-CB	3/8-16 x 6"					
2	7	SP150L7	.62	3/8-16	SP150L7-CB	3/8-16 x 7"		
	2.5	SP200L2.5			.62	3/8-16	SP200L2.5-CB	3/8-16 x 2.5"
	3	SP200L3					SP200L3-CB	3/8-16 x 3"
	3.5	SP200L3.5					SP200L3.5-CB	3/8-16 x 3.5"
	4	SP200L4					SP200L4-CB	3/8-16 x 4"
	4.5	SP200L4.5					SP200L4.5-CB	3/8-16 x 4.5"
	5	SP200L5					SP200L5-CB	3/8-16 x 5"
	6	SP200L6					SP200L6-CB	3/8-16 x 6"
	7	SP200L7					SP200L7-CB	3/8-16 x 7"
8	SP200L8	SP200L8-CB	3/8-16 x 8"					
2.5	9	SP200L9	.62	3/8-16	SP200L9-CB	3/8-16 x 9"		
	5	SP250L5			.62	3/8-16	SP250L5-CB	3/8-16 x 5"
	6	SP250L6					SP250L6-CB	3/8-16 x 6"
	7	SP250L7					SP250L7-CB	3/8-16 x 7"
8	SP250L8	SP250L8-CB	3/8-16 x 8"					
3	5	SP300L5	1.25	5/8-11	SP300L5-CB	5/8-11 x 5.5"		
	6	SP300L6			SP300L6-CB	5/8-11 x 6.5"		
	7	SP300L7			SP300L7-CB	5/8-11 x 7.5"		
	8	SP300L8			SP300L8-CB	5/8-11 x 8.5"		
	9	SP300L9			SP300L9-CB	5/8-11 x 9.5"		
	10	SP300L10			SP300L10-CB	5/8-11 x 10.5"		
4	5	SP400L5	1.25	5/8-11	SP400L5-CB	5/8-11 x 5.5"		
	6	SP400L6			SP400L6-CB	5/8-11 x 6.5"		
	8	SP400L8			SP400L8-CB	5/8-11 x 8.5"		

Smaller diameter Support Pillars available on page L-21.
For custom Support Pillars, refer to section X.