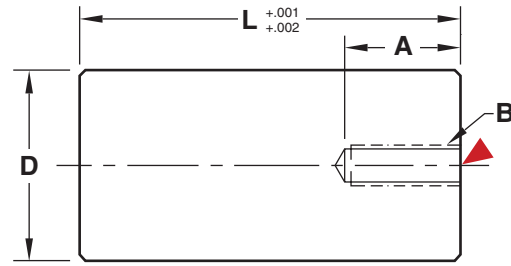
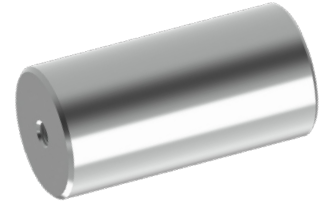




SUPPORT PILLARS

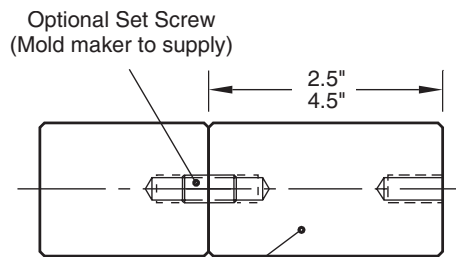
STAINLESS STEEL



M 410 Stainless Steel **H** 30-34 HRC ▶ CAD insertion point

D	CATALOG NUMBER	L	A	B
1	SP100L2.5-SS	2.5	.62	3/8-16
	SP100L3-SS	3		
	SP100L3.5-SS	3.5		
	SP100L4.5-SS	4.5		
1-1/4	SP125L3-SS	3	.62	3/8-16
	SP125L3.5-SS	3.5		
	SP125L4-SS	4		
	SP125L4.5-SS	4.5		
1.5	SP150L3-SS	3	.62	3/8-16
	SP150L3.5-SS	3.5		
	SP150L4-SS	4		
	SP150L4.5-SS	4.5		
2	SP200L3-SS	3	.62	3/8-16
	SP200L3.5-SS	3.5		
	SP200L4-SS	4		
	SP200L4.5-SS	4.5		
	SP200L5-SS	5		
	SP200L6-SS	6		
3	SP300L5-SS	5	1.25	5/8-11
	SP300L6-SS	6		

1" Long Stainless Socket Head Cap Screw included.



All 2.5" and 4.5" long Threaded Support Pillars are tapped for a set screw enabling a second pillar to be attached as an extension.