

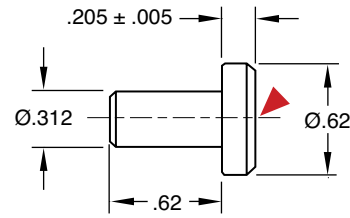


STOP PINS

Dowel Type

M Pre-Hard Steel **H** Black Oxide

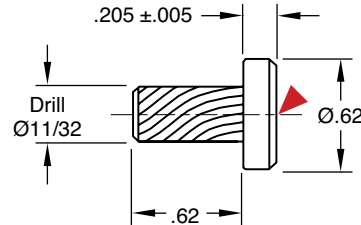
CATALOG NUMBER	DESCRIPTION
STP-1	Stop Pins



Self-Tapping

H AISI 4037 **H** 40-44 HRC **S** Black Oxide

CATALOG NUMBER	DESCRIPTION
STP-2	Self-Tapping Stop Pins

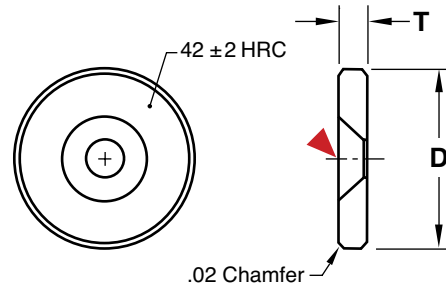


▶ CAD insertion point

STOP DISCS

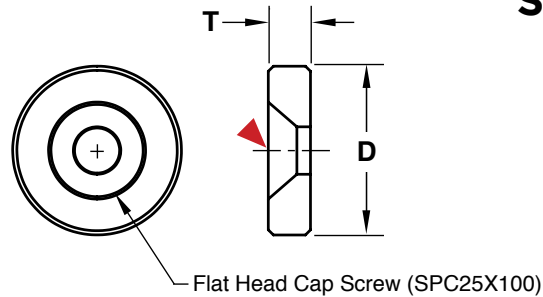
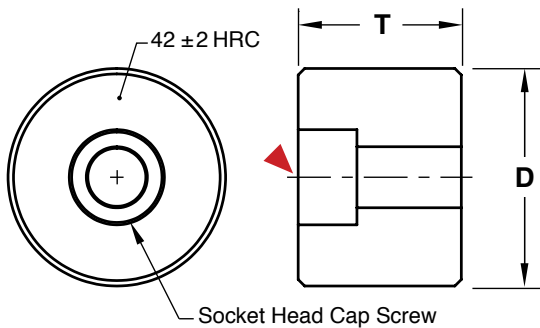
M 4140 **H** 40-44 HRC **S** Black Oxide

CATALOG NUMBER	D +.000 -.015	T +.003 +.005	FLAT HEAD COUNTERBORE
SD68	.687	.188	#10-24
SD100	1.000	.188	1/4-20
SD118	1.187	.188	1/4-20
SD168	1.687	.251	5/16-18



1/2" long Flat Head Screw included.

SPACERS



M 4140 **H** 40-44 HRC **S** Black Oxide

CATALOG NUMBER	D +.000 -.015	T +.002 +.000	SCREW SIZE (INCLUDED)
SPC25X100	1.000	.250	1/4-20 x 5/8 Flat Head
SPC37X100	1.000	.375	1/4-20 x 1/2 Socket Head
SPC50X100	1.000	.500	1/4-20 x 5/8 Socket Head
SPC50X168	1.688	.500	1/4-20 x 5/8 Socket Head
SPC62X100	1.000	.625	1/4-20 x 3/4 Socket Head
SPC75X100	1.000	.750	1/4-20 x 7/8 Socket Head
SPC100X100	1.000	1.000	1/4-20 x 1-1/8 Socket Head
SPC100X168	1.688	1.000	1/4-20 x 1-1/8 Socket Head

▶ CAD insertion point