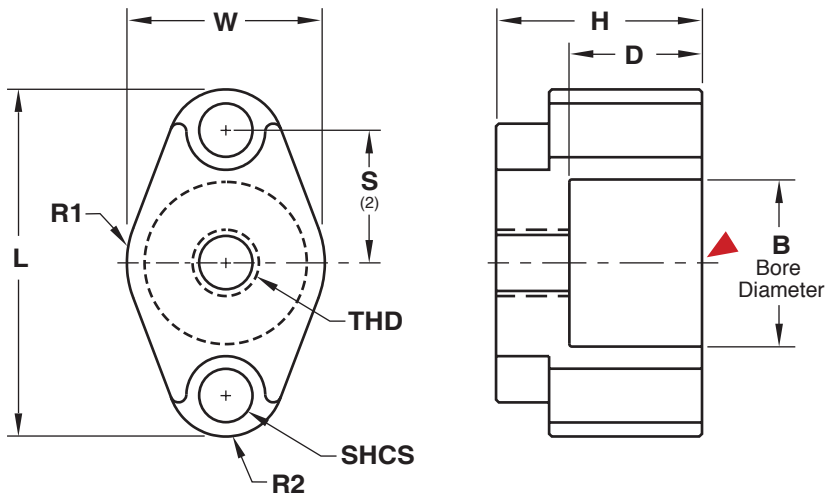


SPRING CUPS



APPLICATION GUIDELINES

- Spring Cups allow to freely check the ejector system during assembly.
- Springs can be safely installed and removed.
- Installation can be in the same locations and function as a PKO Extension.



M 1018 **H** 126 Brinell **S** Black Oxide

CAD insertion point

CATALOG NUMBER	B	L	W	R1	R2	H +.000 -.002	D	THD	S ±.01	SHCS
SCPK100L10-50	1	2.36	1.36	.68	.43	1.052	.500	1/2-13	.813	5/16-18 x 1-1/2
SCPK125L10-50	1-1/4	2.74	1.61	.81	.50	1.052	.500		1.000	3/8-16 x 1-1/2
SCPK125L15-50						1.552	1.000		3/8-16 x 2	
SCPK150L10-50	1-1/2	3.42	1.86	.93	.62	1.052	.500	1.250	1.250	1/2-13 x 1-1/2
SCPK150L15-50						1.552	1.000		1.250	1/2-13 x 2
SCPK150L10-62						1.052	.375	5/8-11	1.250	1/2-13 x 1-1/2
SCPK150L15-62						1.552	.750		1.250	1/2-13 x 2

Screws included.

APPLICATIONS

