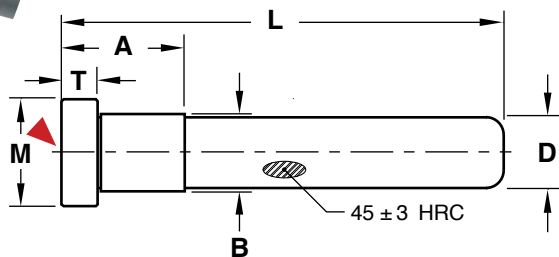


RTI ACCESSORIES

LEADER PINS



M AISI 1117 **H** Surface: 58-62 HRC

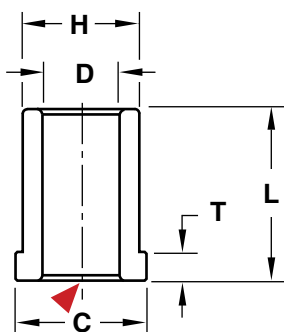
L	D=1/2"	D=5/8"
1.250	RLP50L1.25	—
1.750	RLP50L1.75	RLP62L1.75
2.000	RLP50L2.00	—
2.250	RLP50L2.25	RLP62L2.25
2.500	RLP50L2.50	RLP62L2.50
3.000	RLP50L3.00	RLP62L3.00
3.500	RLP50L3.50	RLP62L3.50
4.000	—	RLP62L4.00

NOMINAL DIAMETER	D +.0000 -.0005	A +.00 -.03	B +.0005 -.0000	M +.00 -.01	T +.000 -.002
1/2	.499	.75	.500	.750	.250
5/8	.624	.87	.625	.865	.250

Note: The RLP50L1.25 has an "A" dimension of .62".

▶ CAD insertion point

SHOULDER BUSHINGS



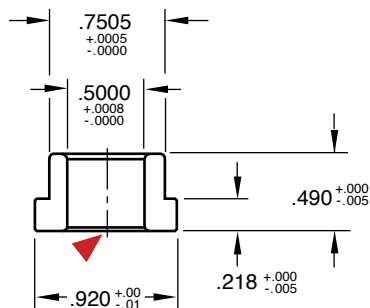
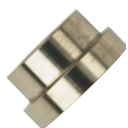
M CA954 Solid Bronze **H** 170 Brinell

NOMINAL PLATE THICKNESS	L	D=1/2"	D=5/8"
.625	.625	RSB50L.62	—
.875	.875	—	RSB62L.87
1.000	.900	RSB50L1.00	—
1.125	1.125	RSB50L1.12	—
1.250	1.150	—	RSB62L1.25
1.375-S	1.275	RSB50L1.27	RSB62L1.27
1.375	1.375	—	RSB62L1.37
1.500	1.400	RSB50L1.50	RSB62L1.50
1.625	1.625	RSB50L1.62	—
1.875-S	1.775	RSB50L1.87	RSB62L1.77
1.875	1.875	—	RSB62L1.87
2.375	2.275	RSB50L2.37	RSB62L2.37
2.875	2.775	—	RSB62L2.87

▶ CAD insertion point

Note: The "-S" signifies use with Solid inserts.

GUIDE PIN BUSHINGS



M CA954 Solid Bronze **H** 170 Brinell

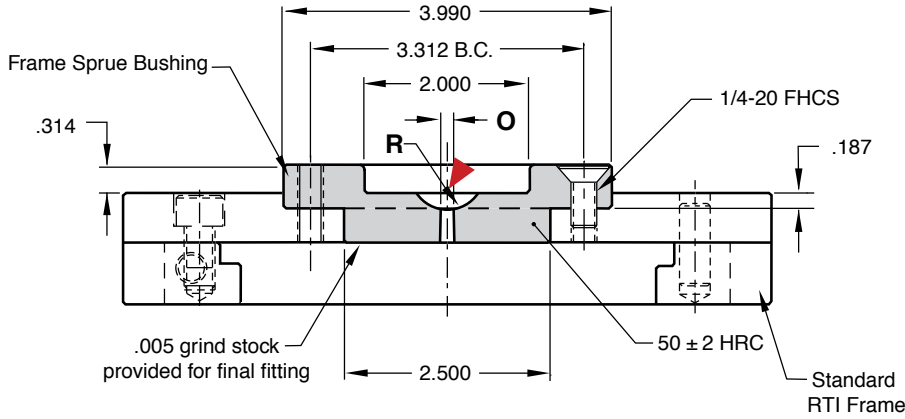
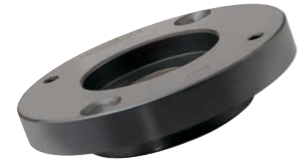
CATALOG NUMBER	DESCRIPTION
RGE50	1/2" ID Guided Ejector Bushing

▶ CAD insertion point



RTI ACCESSORIES

FRAME SPRUE BUSHINGS



M H-13 **S** Melonite (SBN)

CATALOG NUMBER	O	R
RFS-512	5/32	1/2
RFS-534	5/32	3/4
RFS-712	7/32	1/2
RFS-734	7/32	3/4
RFS-912	9/32	1/2
RFS-934	9/32	3/4

Screws included.

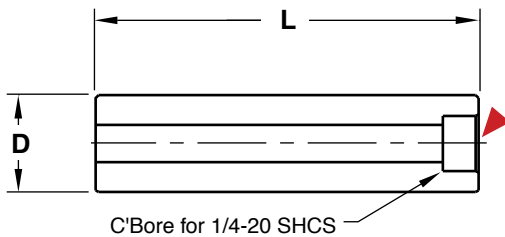
SUPPORT PILLARS



Counterbored

M AISI 1018 **H** 126 Brinell

▶ CAD insertion point

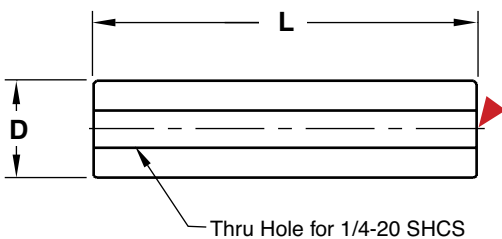


D	CATALOG NUMBER	L +.002 +.000	SCREW LENGTH (1/4-20 SHCS)
3/4	RSP75L2.1	2.125	2.25
	RSP75L2.6	2.625	2.75
	RSP75L3.5	3.500	3.75
1	RSP100L2.1	2.125	2.25
	RSP100L2.6	2.625	2.75
	RSP100L3.5	3.500	3.75
1-1/4	RSP125L2.1	2.125	2.25
	RSP125L2.6	2.625	2.75
	RSP125L3.5	3.500	3.75

Screw included.

Clearance Hole

M AISI 1018 **H** 126 Brinell

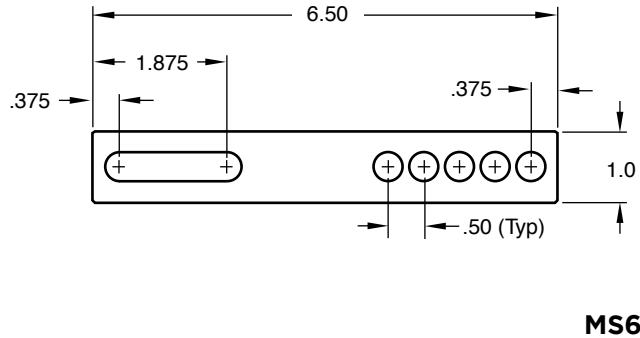
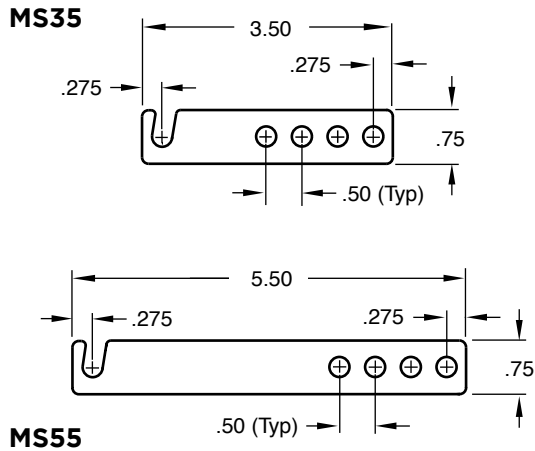


CATALOG NUMBER	D	L +.001 +.000	SCREW LENGTH (1/4-20 SHCS)
RSP75L1.8	3/4	1.813	2.75
RSP75L2.7		2.688	3.75

Screw included.

RTI ACCESSORIES

STRAPS

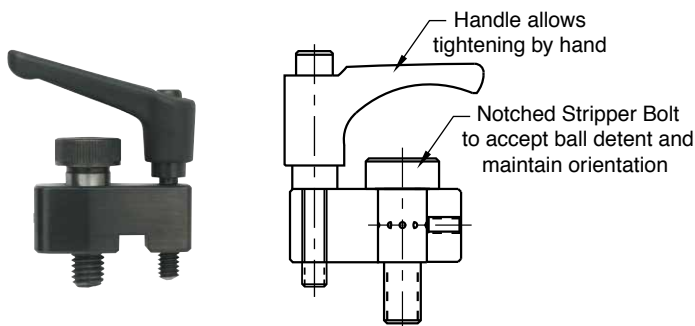


M MS35 & MS55: Polycarbonate, MS65: AISI 1018

CATALOG NUMBER	DESCRIPTION	THICKNESS
MS35	3.5" Long RTI Strap	.200
MS55	5.5" Long RTI Strap	.200
MS65	6.5" Long Heavy Duty Strap	.500

MS35 & MS55 include 1/4-20 thumb screw.
MS65 includes (2) 3/8-16 x 1" long SHCS.

FRAME CLAMPS



CATALOG NUMBER	DESCRIPTION
RFC-100	RTI Frame/Insert Clamp (Sold Individually)

T-HANDLES



CATALOG NUMBER	DESCRIPTION
T100	RTI T-Handle

Designed for inserts less than 75 pounds.