

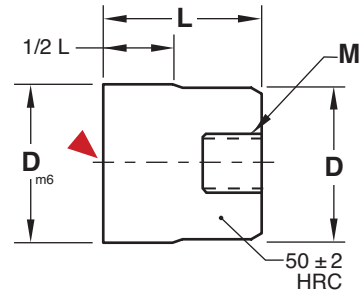
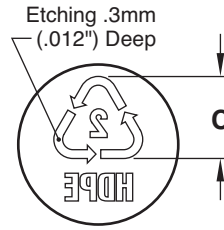
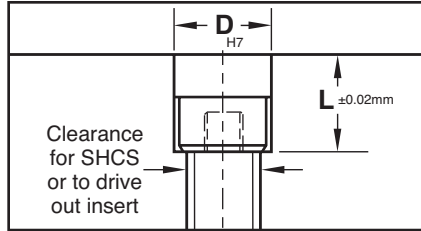
RECYCLE INSERTS

SPI & ASTM STANDARDS

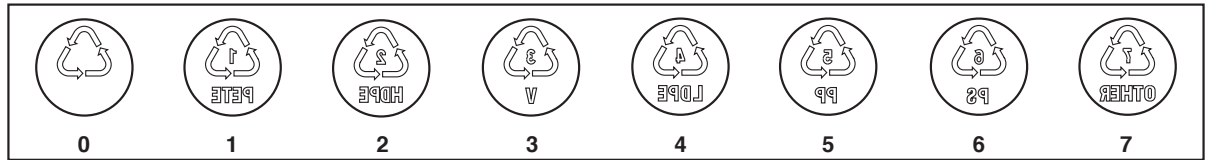


Installation Guidelines:

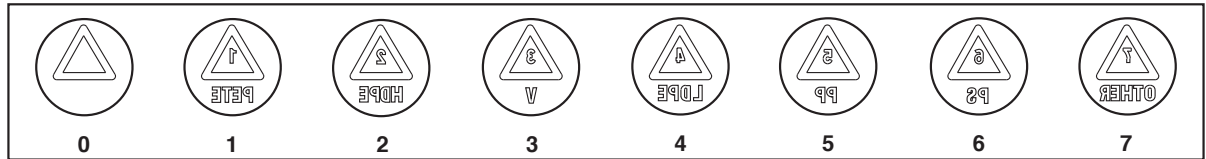
To avoid damage to face, press insert into hole using a brass or plastic mallet.



SPI STANDARD



ASTM STANDARD



M 420 Stainless (1.4034) **H** 50-54 HRC

CAD insertion point

SPI CATALOG NUMBER	ASTM CATALOG NUMBER	D	Material Code	Material	L	C	M
RI-10-0	RIS-10-0	10 mm (.3937")	N/A	BLANK	12 mm (.4724")	6 mm (.2362")	M5 x .08
RI-10-1	RIS-10-1		1	POLYETHYLENE TEREPHTHALATE			
RI-10-2	RIS-10-2		2	HIGH DENSITY POLYETHYLENE			
RI-10-3	RIS-10-3		3	POLYVINYL CHLORIDE			
RI-10-4	RIS-10-4		4	LOW DENSITY POLYETHYLENE			
RI-10-5	RIS-10-5		5	POLYPROPYLENE			
RI-10-6	RIS-10-6		6	POLYSTYRENE			
RI-10-7	RIS-10-7		7	OTHER			
RI-16-0	RIS-16-0	16 mm (.6299")	N/A	BLANK	14 mm (.5518")	10 mm (.3937")	M6 x 1.0
RI-16-1	RIS-16-1		1	POLYETHYLENE TEREPHTHALATE			
RI-16-2	RIS-16-2		2	HIGH DENSITY POLYETHYLENE			
RI-16-3	RIS-16-3		3	POLYVINYL CHLORIDE			
RI-16-4	RIS-16-4		4	LOW DENSITY POLYETHYLENE			
RI-16-5	RIS-16-5		5	POLYPROPYLENE			
RI-16-6	RIS-16-6		6	POLYSTYRENE			
RI-16-7	RIS-16-7		7	OTHER			
RI-20-0	RIS-20-0	20 mm (.7874")	N/A	BLANK	16 mm (.6299")	12 mm (.4724")	M6 x 1.0
RI-20-1	RIS-20-1		1	POLYETHYLENE TEREPHTHALATE			
RI-20-2	RIS-20-2		2	HIGH DENSITY POLYETHYLENE			
RI-20-3	RIS-20-3		3	POLYVINYL CHLORIDE			
RI-20-4	RIS-20-4		4	LOW DENSITY POLYETHYLENE			
RI-20-5	RIS-20-5		5	POLYPROPYLENE			
RI-20-6	RIS-20-6		6	POLYSTYRENE			
RI-20-7	RIS-20-7		7	OTHER			

Contact Customer Service for pricing and availability of other sizes or material engraving.