



PROFILE[®] REAL-TIME MONITORING

PROFILE SYSTEM FEATURES:

Global Overview of Assets

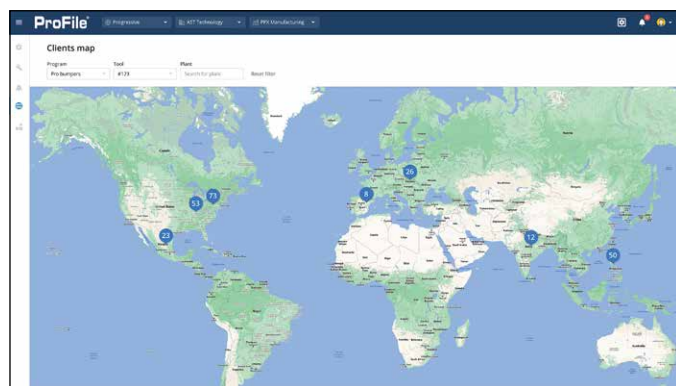
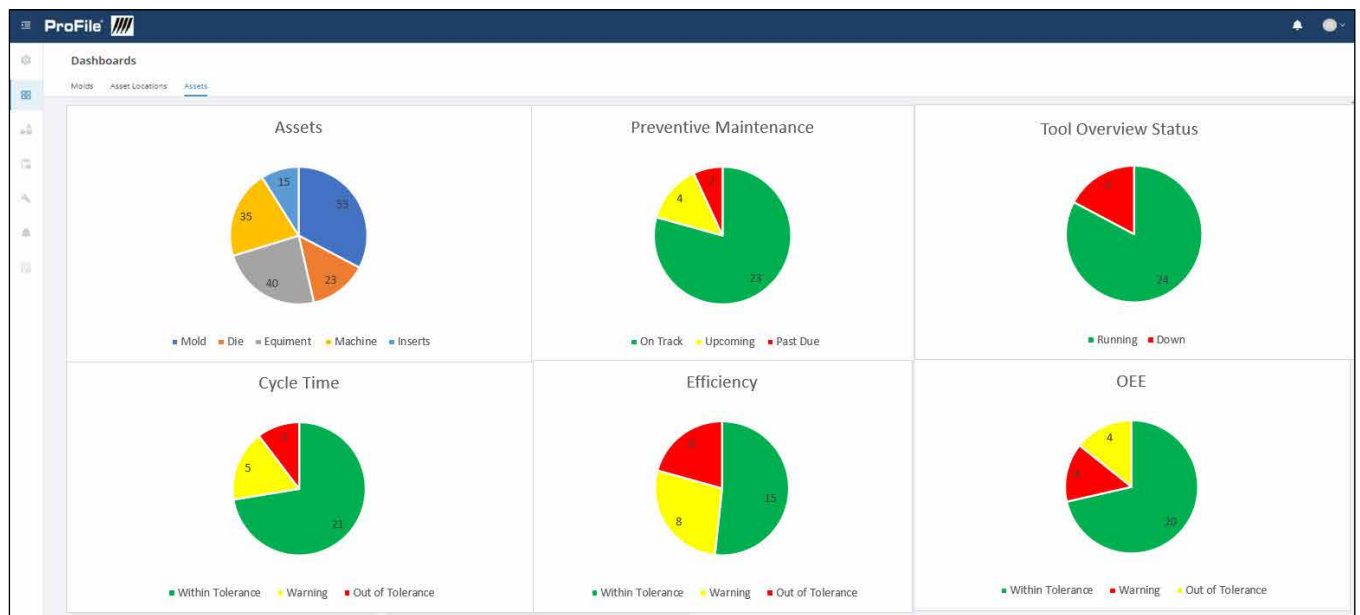
- Real time visibility of performance and key metrics.
- Monitor all assets: Molds, Machines, Dies and Equipment.
- Track mold condition, data, and GPS location.

Mold Maintenance & Repair

- Track Preventive Maintenance adherence.
- Process Work Orders using the integrated system.
- Track Spare Parts Inventory and Parts Consumed.
- Generate true cost of maintenance report.

Data Sharing

- Website can be accessed anywhere the internet is available.
- ProFile Mobile App for iOS and Android allows easy access.
- Filing Cabinet with 10GB per asset facilitates document sharing with stakeholders based on their role.
- Interface ProFile with existing ERP/MES systems using APIs.
- Utilize APIs to connect to report generating platforms.



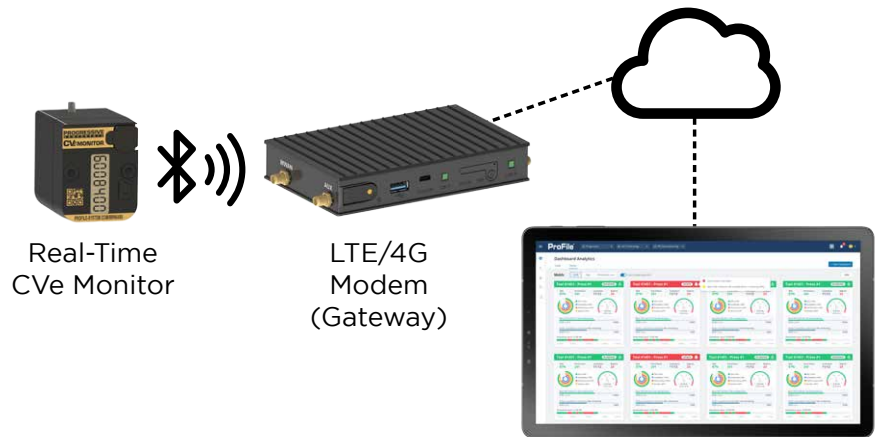
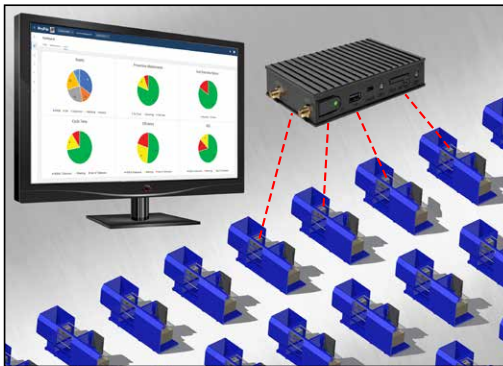
Global view of all assets by location, quantity, and class.



Customizable Performance Dashboard showing status and KPIs.

PROFILE® REAL-TIME MONITORING

For real-time monitoring of tools, Progressive provides hardware and website access for OEMs and molders utilizing the Real-Time CVE Monitors. For alternative OnDemand App use, refer to page F-9.







HARDWARE

Gateway

- Bluetooth® technology pushes tool data from the CVE Monitor to the cloud for real-time reporting.
- Utilizes FCC and CE certified internal components.
- One (1) Gateway per facility collects data from all CVE Monitors present on tools via Bluetooth transmissions.
- Range Extenders are available for long distances.
- Accesses the internet via cellular technology.
- Sends data to the customer’s web portal consistently.
- Includes SIM Card and related programming for regional use.

Cables & Accessories

- The PLC cable allows for connection from the CVE Monitor to the PLC for assembly or decorating.
- To connect to an external switch or when using with high speeds and heat applications, utilize the cable with the Magnetic Switch connection.
- Battery replacement kit includes installation instructions.
- Accessories below are exclusively used with the Real-Time CVE Monitor. Contact SystemMonitoring@procomps.com for a consultative quote on all items required for a single or multiple locations.

CATALOG NUMBER	DESCRIPTION	IMAGE
CVEL-GWBT	Real-Time Gateway North America version	
CVEL-GWBT-IN	Real-Time Gateway International version	
CVEL-BTEXT	Range Extender: RF Adapter to USB	
CVEL-BT-PLC	Cable: PLC Molex® Connector to White/Green/Black/Red Wires Wire: 72" (1800mm) Long	
CVEL-BT-SWT	Cable: PLC Molex® Connector to Magnetic Switch Switch & Magnet: .9"x.55" (23mmx14mm) Wire: 72" (1825mm) Long	
CVE-BTREPLKIT	Battery Replacement Kit for the Real-Time CVE Monitor Includes 2 batteries, housing seal, and Torx® wrench	