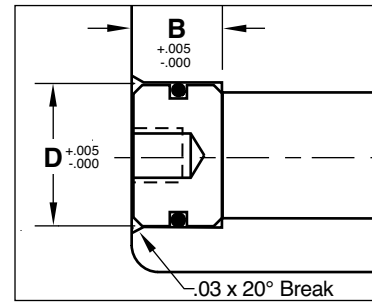
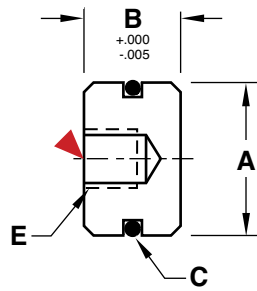


THREADLESS PLUGS

PUSH-IN O-RING PLUGS



Threadless O-Ring Plugs are designed for inserts backed up by mold steel.

M Brass with Buna O-Rings

Maximum temp: 250°F (120°C)

CATALOG NUMBER	A	B	C O-RING	D REAM DIA.	E	REPLACEMENT O-RING (BUNA)
TWP281	.273	.250	1/16	.281	#6-32	OR-007
TWP375	.366	.312	1/16	.375	#10-32	OR-010
TWP500	.494	.312	1/16	.500	#10-32	OR-012
TWP625	.618	.437	3/32	.625	1/4-20	OR-111
TWP750	.743	.500	3/32	.750	1/4-20	OR-113
TWP1000	.990	.625	1/8	1.000	3/8-16	OR-117
TWP1187	1.177	.625	1/8	1.187	3/8-16	OR-120

ALTERNATIVE CONFIGURATIONS AVAILABLE

- For plugs with Viton O-rings (maximum temperature 400°F, 200°C) specify “-V” at the end of the catalog number. Ex. TWP500-V or OR-007-V for the O-ring.
- For stainless steel threadless plugs, specify “-SS” at the end of the catalog number. Ex. TWP500-SS or TWP281-SS-V for stainless plugs with Viton O-rings.

▶ CAD insertion point

TAP-IN O-RING PLUGS

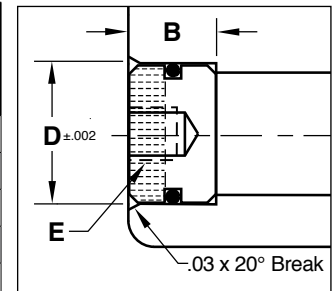
M Brass with Viton O-Rings



APPLICATION GUIDELINES

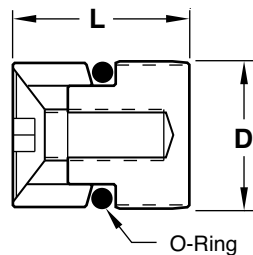
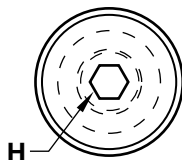
- Tap-In O-Ring Plugs do not require steel back up.
- Viton O-Rings included for maximum temperature of 400°F (200°C).
- Max pressure: 200 psi

CATALOG NUMBER	NOMINAL PIPE SIZE	D REAM DIA.	B DEPTH +.005 / -.000	E
TAP281	1/16	.281	.312	#6-32
TAP375	1/8	.375	.312	#10-32
TAP500	1/4	.500	.375	1/4-20
TAP625	3/8	.625	.437	5/16-18
TAP750	1/2	.750	.500	5/16-18



THREADLESS DIVERTING PLUGS

M Brass with Buna O-Rings



CATALOG NUMBER	NOMINAL PIPE SIZE	D DRILL SIZE	H	L
TDP12	1/8	11/32	5/64	.50
TDP12-OS	1/8	23/64	5/64	.50
TDP25	1/4	7/16	1/8	.56
TDP25-OS	1/4	29/64	1/8	.56
TDP37	3/8	9/16	1/8	.62
TDP37-OS	3/8	37/64	1/8	.62
TDP50	1/2	11/16	1/8	.62
TDP50-OS	1/2	45/64	1/8	.62

APPLICATION GUIDELINES

- Maximum pressure: 70 psi

ALTERNATIVE CONFIGURATIONS AVAILABLE

- For plugs with Viton O-rings (maximum temperature 400°F, 200°C) specify “-V” at the end of the catalog number. Ex. TDP50-V or TDP50-OS-V