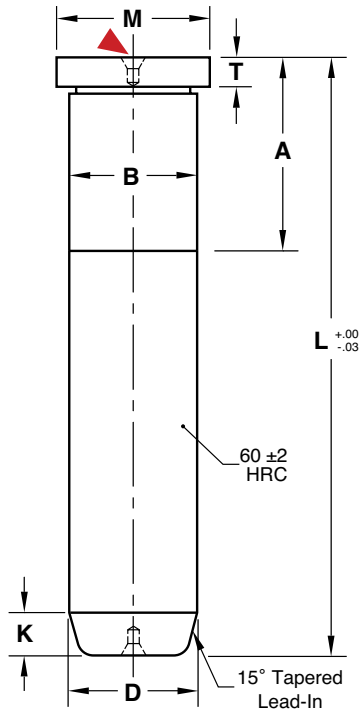


LEADER PINS

INCH STANDARD



M AISI 1117 **H** Surface: 58-62 HRC

CAD insertion point

L	D=3/4"		D=7/8"		D=1"		D=1-1/4"	
	A	CATALOG NUMBER	A	CATALOG NUMBER	A	CATALOG NUMBER	A	CATALOG NUMBER
1-3/4	7/8	LP75L1.75	7/8	LP87L1.75	7/8	LP100L1.75	—	—
2-1/4	7/8	LP75L2.25	7/8	LP87L2.25	7/8	LP100L2.25	—	—
2-3/4	7/8	LP75L2.75	7/8	LP87L2.75	7/8	LP100L2.75	7/8	LP125L2.75
3-1/4	7/8	LP75L3.25	7/8	LP87L3.25	7/8	LP100L3.25	7/8	LP125L3.25
3-3/4	7/8	LP75L3.75	7/8	LP87L3.75	7/8	LP100L3.75	7/8	LP125L3.75
4-1/4	1-3/8	LP75L4.25	1-3/8	LP87L4.25	1-3/8	LP100L4.25	7/8	LP125L4.25
4-3/4	1-3/8	LP75L4.75	1-3/8	LP87L4.75	1-3/8	LP100L4.75	1-3/8	LP125L4.75
5-1/4	1-3/8	LP75L5.25	1-3/8	LP87L5.25	1-3/8	LP100L5.25	1-3/8	LP125L5.25
5-3/4	1-7/8	LP75L5.75	1-3/8	LP87L5.75	1-3/8	LP100L5.75	1-3/8	LP125L5.75
6-1/4	1-7/8	LP75L6.25	1-3/8	LP87L6.25	1-3/8	LP100L6.25	1-3/8	LP125L6.25
6-3/4	1-7/8	LP75L6.75	1-7/8	LP87L6.75	1-7/8	LP100L6.75	1-7/8	LP125L6.75
7-1/4	1-7/8	LP75L7.25	1-7/8	LP87L7.25	1-7/8	LP100L7.25	1-7/8	LP125L7.25
7-3/4	1-7/8	LP75L7.75	1-7/8	LP87L7.75	1-7/8	LP100L7.75	1-7/8	LP125L7.75
8-1/4	—	—	1-7/8	LP87L8.25	1-7/8	LP100L8.25	1-7/8	LP125L8.25
8-3/4	—	—	1-7/8	LP87L8.75	1-7/8	LP100L8.75	1-7/8	LP125L8.75
9-1/4	1-7/8	LP75L9.25	—	—	1-7/8	LP100L9.25	1-7/8	LP125L9.25
9-3/4	—	—	—	—	1-7/8	LP100L9.75	1-7/8	LP125L9.75
10-1/4	—	—	—	—	1-7/8	LP100L10.25	1-7/8	LP125L10.25
10-3/4	—	—	1-7/8	LP87L10.75	1-7/8	LP100L10.75	1-7/8	LP125L10.75
11-1/4	—	—	—	—	1-7/8	LP100L11.25	1-7/8	LP125L11.25
11-3/4	—	—	—	—	1-7/8	LP100L11.75	1-7/8	LP125L11.75
12-1/4	—	—	1-7/8	LP87L12.25	1-7/8	LP100L12.25	1-7/8	LP125L12.25
12-3/4	—	—	—	—	—	—	1-7/8	LP125L12.75
13-3/4	—	—	—	—	—	—	1-7/8	LP125L13.75
14-3/4	—	—	—	—	—	—	1-7/8	LP125L14.75
15-3/4	—	—	—	—	—	—	1-7/8	LP125L15.75

General Dimensions

NOMINAL DIAMETER	D +.0000 -.0005	M +.00 -.01	T +.000 -.002	B +.0005 -.0000	K
3/4	.749	.990	.187	.751	3/16
7/8	.874	1.115	.250	.876	3/16
1	.999	1.240	.250	1.001	3/16
1-1/4	1.249	1.490	.312	1.251	1/4
1-1/2	1.499	1.740	.312	1.501	1/4
2	1.999	2.240	.312	2.001	1/2
2-1/2	2.499	2.740	.312	2.501	1/2
3	2.999	3.365	.500	3.001	1/2

L	D=1-1/2"		D=2"		D=2-1/2"		D=3"	
	A	CATALOG NUMBER	A	CATALOG NUMBER	A	CATALOG NUMBER	A	CATALOG NUMBER
3-3/4	1-3/8	LP150L3.75	—	—	—	—	—	—
4-1/4	1-3/8	LP150L4.25	—	—	—	—	—	—
4-3/4	1-3/8	LP150L4.75	—	—	—	—	—	—
5-1/4	1-3/8	LP150L5.25	—	—	—	—	—	—
5-3/4	1-3/8	LP150L5.75	1-7/8	LP200L5.75	2-3/8	LP250L5.75	—	—
6-1/4	1-3/8	LP150L6.25	—	—	—	—	—	—
6-3/4	1-3/8	LP150L6.75	1-7/8	LP200L6.75	2-3/8	LP250L6.75	—	—
7-3/4	1-7/8	LP150L7.75	1-7/8	LP200L7.75	2-3/8	LP250L7.75	—	—
8-3/4	1-7/8	LP150L8.75	1-7/8	LP200L8.75	2-3/8	LP250L8.75	2-7/8	LP300L8.75
9-3/4	1-7/8	LP150L9.75	1-7/8	LP200L9.75	2-3/8	LP250L9.75	—	—
10-3/4	1-7/8	LP150L10.75	1-7/8	LP200L10.75	2-3/8	LP250L10.75	2-7/8	LP300L10.75
11-3/4	1-7/8	LP150L11.75	1-7/8	LP200L11.75	2-3/8	LP250L11.75	—	—
12-3/4	1-7/8	LP150L12.75	1-7/8	LP200L12.75	2-3/8	LP250L12.75	2-7/8	LP300L12.75
13-3/4	1-7/8	LP150L13.75	1-7/8	LP200L13.75	2-3/8	LP250L13.75	—	—
14-3/4	1-7/8	LP150L14.75	1-7/8	LP200L14.75	2-3/8	LP250L14.75	2-7/8	LP300L14.75
15-3/4	1-7/8	LP150L15.75	1-7/8	LP200L15.75	2-3/8	LP250L15.75	—	—
16-3/4	—	—	2-3/8	LP200L16.75	2-3/8	LP250L16.75	2-7/8	LP300L16.75
18-3/4	—	—	2-3/8	LP200L18.75	2-3/8	LP250L18.75	2-7/8	LP300L18.75

ALTERNATIVE CONFIGURATIONS AVAILABLE

- For Leader Pins with a 7/8" press fit for guided ejection applications, please refer to page B-8.
- For Metric DIN standard Leader Pins, refer to page B-7.
- For Black Nitride inch standard Leader Pins, refer to page B-10.