



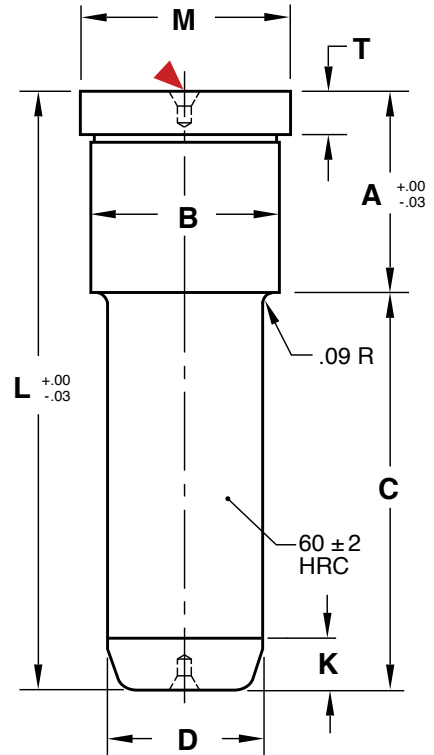
# LEADER PINS SHOULDER STYLE



**M** AISI 1117 **H** Surface: 58-62 HRC

CAD insertion point

A	C	L	D=1/2"	D=3/4"	D=1"	D=1-1/4"
7/8	7/8	1-3/4	SLP50X87L175	SLP75X87L175	—	—
	1-3/8	2-1/4	SLP50X87L225	SLP75X87L225	—	—
	1-7/8	2-3/4	SLP50X87L275	—	—	—
	2-3/8	3-1/4	SLP50X87L325	SLP75X87L325	—	—
	2-7/8	3-3/4	—	SLP75X87L375	SLP100X87L375	—
1-3/8	7/8	2-1/4	SLP50X137L225	SLP75X137L225	—	—
	1-3/8	2-3/4	SLP50X137L275	SLP75X137L275	SLP100X137L275	—
	1-7/8	3-1/4	SLP50X137L325	SLP75X137L325	SLP100X137L325	—
	2-3/8	3-3/4	—	SLP75X137L375	—	—
	2-7/8	4-1/4	—	SLP75X137L425	SLP100X137L425	—
	3-3/8	4-3/4	—	SLP75X137L475	—	SLP125X137L475
1-7/8	7/8	2-3/4	SLP50X187L275	—	—	—
	1-3/8	3-1/4	SLP50X187L325	SLP75X187L325	—	—
	1-7/8	3-3/4	SLP50X187L375	SLP75X187L375	SLP100X187L375	—
	2-3/8	4-1/4	—	SLP75X187L425	SLP100X187L425	SLP125X187L425
	2-7/8	4-3/4	—	SLP75X187L475	SLP100X187L475	—
	3-3/8	5-1/4	—	SLP75X187L525	—	—
	3-7/8	5-3/4	—	SLP75X187L575	—	SLP125X187L575
2-3/8	7/8	3-1/4	SLP50X237L325	—	—	—
	1-3/8	3-3/4	—	SLP75X237L375	—	—
	1-7/8	4-1/4	—	SLP75X237L425	SLP100X237L425	—
	2-3/8	4-3/4	—	SLP75X237L475	SLP100X237L475	—
	2-7/8	5-1/4	—	SLP75X237L525	—	SLP125X237L525
	3-3/8	5-3/4	—	—	SLP100X237L575	—
	3-7/8	6-1/4	—	—	—	SLP125X237L625
2-7/8	1-3/8	4-1/4	—	SLP75X287L425	—	—
	1-7/8	4-3/4	—	SLP75X287L475	SLP100X287L475	—
	2-3/8	5-1/4	—	SLP75X287L525	SLP100X287L525	—
	2-7/8	5-3/4	—	SLP75X287L575	SLP100X287L575	SLP125X287L575
	3-3/8	6-1/4	—	—	SLP100X287L625	—
	3-7/8	6-3/4	—	SLP75X287L675	—	—
	4-3/8	7-1/4	—	—	—	SLP125X287L725
3-3/8	2-3/8	5-3/4	—	SLP75X337L575	—	—
	3-3/8	6-3/4	—	SLP75X337L675	—	—
	4-3/8	7-3/4	—	—	SLP100X337L775	—
3-7/8	2-3/8	6-1/4	—	SLP75X387L625	SLP100X387L625	—
	2-7/8	6-3/4	—	SLP75X387L675	SLP100X387L675	—
4-3/8	2-7/8	7-1/4	—	—	SLP100X437L725	—
	3-3/8	7-3/4	—	—	—	SLP125X437L775
4-7/8	3-7/8	8-3/4	—	—	SLP100X487L875	SLP125X487L875
5-7/8	3-7/8	9-3/4	—	—	SLP100X587L975	—
	5-7/8	11-3/4	—	—	—	SLP125X587L1175



### General Dimensions

NOM. DIA.	D +.0000 -.0005	B +.0005 -.0000	M +.00 -.01	T +.000 -.002	K
1/2	.499	.751	.853	.187	3/16
3/4	.749	1.126	1.250	.312	3/16
1	.999	1.376	1.500	.312	3/16
1-1/4	1.249	1.626	1.750	.312	1/4

### ALTERNATIVE CONFIGURATIONS AVAILABLE

- Shoulder Leader Pins are available with Black Nitride treatment. To order, specify "-BN" at the end of the catalog number. Ex: SLP75X387L625-BN