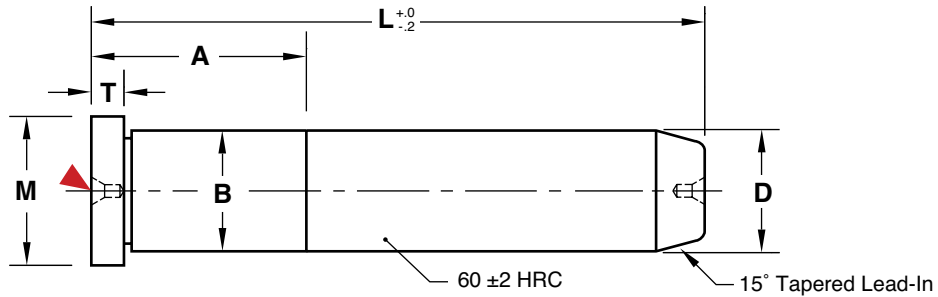




LEADER PINS

METRIC DIN STANDARD



General Dimensions

D	B	M	T
-0.007 -0.026	$+0.011$ $+0.002$	$+0$ $-.2$	
20	20	24	8
25	25	28	15
30	30	36	15

▶ CAD insertion point

M AISI 1117 (1.7131) **H** Core: Approx. 25 HRC, Surface: 58-62 HRC

L	D=20MM		D=25MM		D=30MM	
	A	CATALOG NUMBER	A	CATALOG NUMBER	A	CATALOG NUMBER
100	28	LPD20L100	35	LPD25L100	45	LPD30L100
120	28	LPD20L120	35	LPD25L120	45	LPD30L120
140	28	LPD20L140	35	LPD25L140	45	LPD30L140
160	—	—	—	—	45	LPD30L160

ALTERNATIVE CONFIGURATIONS AVAILABLE

- Metric DIN Guided Ejector Bushings are available on page B-14.
- DIN Leader Pins are available with Black Nitride treatment. To order, specify “-BN” at the end of the catalog number. Ex: LPD25L140-BN.
- For inch standard Leader Pins, refer to page B-6 and B-10.