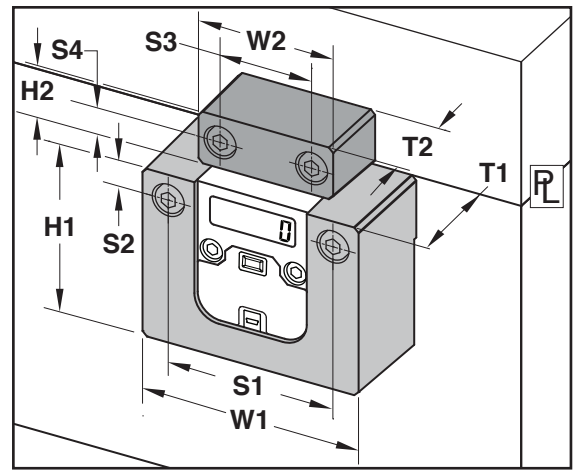


INSULATOR BLOCKS

EXTERNAL MOUNT



Application Guidelines:

- Maximum temperature: 180°C/360°F.
- Installation can be on the cavity or core half of the tool. For use with CVe Live, mount to the stationary half for optimum cable routing.
- The Inch or Metric Insulator Block accepts the screws from the square CounterView sold on page F-8 or the CVe Monitor sold on page F-1.

M Durethan

CATALOG NUMBER	DESCRIPTION	HI	WI	TI	SI	S2	H2	W2	T2	S3	S4
CV-BLK	Inch version with screws: (2) 1/4-20 x 1-1/8 (Actuator) (2) 1/4-20 x 1-1/2 (Block)	2.37	3.00	1.37	2.250	.500	.75	2.00	1.00	1.000	.375
CVMM-BLK	Metric version with screws: (2) M6-1.0 x 30 (Actuator) (2) M6-1.0 x 40 (Block)	58.5	78	35	58	13	20	47	25	23	10

INSULATOR BLOCK

R-SERIES COUNTERVIEW ATTACHMENT BLOCK



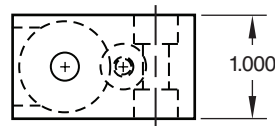
M A36 **S** Black Oxide

CATALOG NUMBER	DESCRIPTION
CVRA-100	CounterView Attachment Block Set

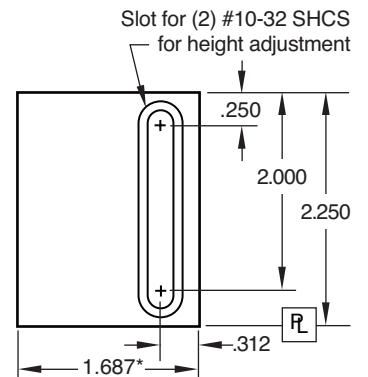
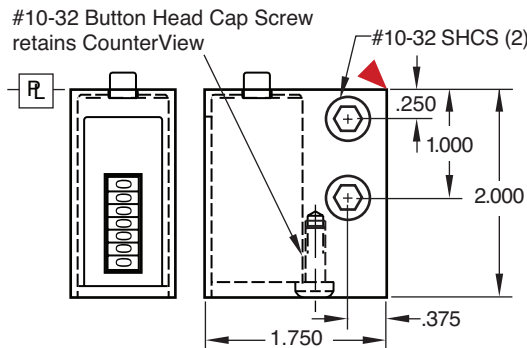
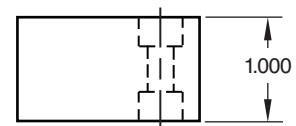
▶ CAD insertion point

The CV Attachment Block set includes both blocks and mounting screws. R-Series CounterViews are sold separately on page F-9.

CounterView Block



Actuation Block



Note: The width of the Actuation Block is smaller by 1/16" to allow for clearance if the CounterView Block is recessed into the mold.