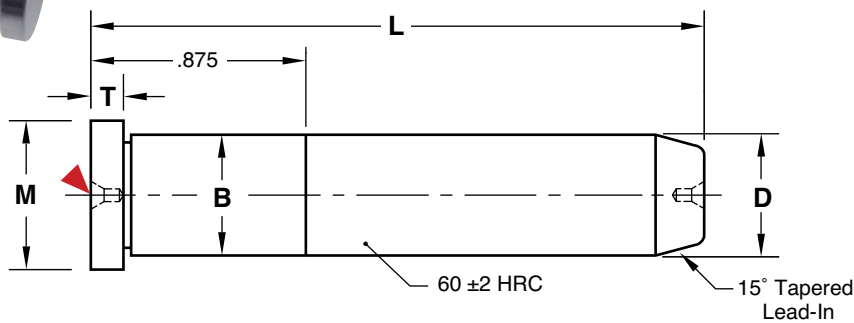


GUIDED EJECTOR PINS

STRAIGHT STYLE



General Dimensions

NOMINAL DIAMETER	D +.0000 -.0005	B +.0005 -.0000	M +.00 -.01	T +.000 -.002
1/2	.499	.501	.740	.187
3/4	.749	.751	.990	.187
7/8	.874	.876	1.115	.250
1	.999	1.001	1.240	.250
1-1/4	1.249	1.251	1.490	.312
1-1/2	1.499	1.501	1.740	.312
2	1.999	2.001	2.240	.312

M AISI 1117 **H** Core: Approx. 25 HRC, Surface: 58-62 HRC

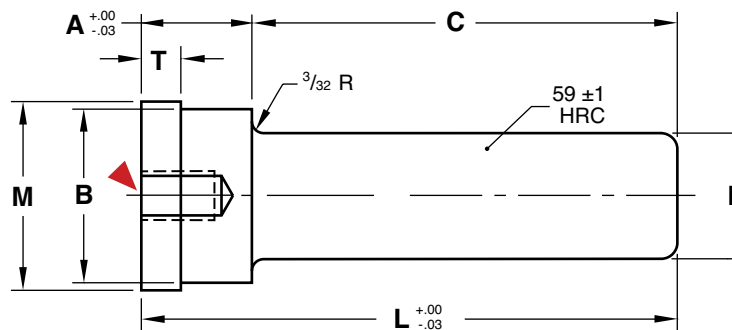
CAD insertion point

L +.00 -.03	D=1/2"	D=3/4"	D=7/8"	D=1"	D=1-1/4"	D=1-1/2"	D=2"
4-1/4	LP50L4.25-P	LP75L4.25-P	LP87L4.25-P	LP100L4.25-P	LP125L4.25	LP150L4.25-P	—
4-3/4	LP50L4.75-P	LP75L4.75-P	LP87L4.75-P	LP100L4.75-P	LP125L4.75-P	LP150L4.75-P	—
5-1/4	—	LP75L5.25-P	LP87L5.25-P	LP100L5.25-P	LP125L5.25-P	LP150L5.25-P	—
5-3/4	—	LP75L5.75-P	LP87L5.75-P	LP100L5.75-P	LP125L5.75-P	LP150L5.75-P	LP200L5.75-P
6-1/4	—	LP75L6.25-P	LP87L6.25-P	LP100L6.25-P	LP125L6.25-P	LP150L6.25-P	LP200L6.25-P

ALTERNATIVE CONFIGURATIONS AVAILABLE

- Leader Pins with 1-3/8" and other press fit lengths are available on page B-6.
- Guided Ejector Pins are available with Black Nitride treatment. To order, specify "-BN" at the end of the catalog number. Ex: LP100L6.25-P-BN (above) or GEP50X87L425-BN from the chart below.
- For Black Nitride inch Standard Leader Pins, refer to page B-10.

SHOULDER STYLE



General Dimensions

NOMINAL DIAMETER	D +.0000 -.0005	B +.0005 -.0000	M +.00 -.01	T +.000 -.015
1/2	.499	.751	.853	.187
3/4	.749	1.126	1.250	.312
1	.999	1.376	1.500	.312

M AISI 8620 **H** Core: Approx. 25 HRC, Surface: 58-60 HRC CAD insertion point

A	C	L	D=1/2"	D=3/4"	D=1"
7/8	2-7/8	3-3/4	GEP50X87L375	—	—
	3-3/8	4-1/4	GEP50X87L425	GEP75X87L425	GEP100X87L425
	3-7/8	4-3/4	GEP50X87L475	GEP75X87L475	GEP100X87L475
	4-3/8	5-1/4	GEP50X87L525	GEP75X87L525	GEP100X87L525
1-3/8	4-7/8	5-3/4	—	GEP75X87L575	GEP100X87L575
	3-7/8	5-1/4	—	—	GEP100X137L525
	4-3/8	5-3/4	—	—	GEP100X137L575
	4-7/8	6-1/4	—	—	GEP100X137L625