

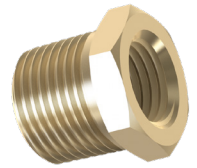
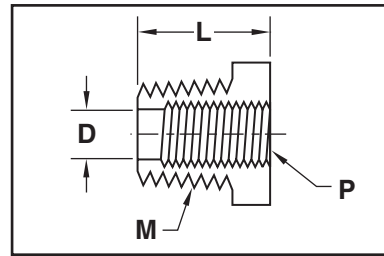


# FITTINGS

## REDUCING BUSHINGS

**M** Brass

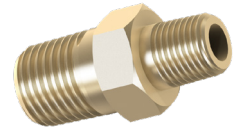
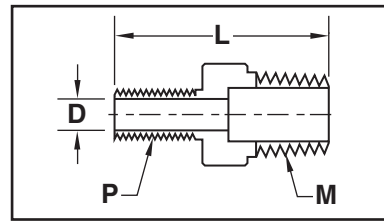
CATALOG NUMBER	M NPT	P NPT	L	D
RB18-0	1/8	#10-32 UNF	.56	.156
RB18-1	1/8	1/16	.56	.250
RB14-0	1/4	#10-32 UNF	.75	.156
RB14-2	1/4	1/8	.75	.328
RB38-4	3/8	1/4	.75	.422
RB50-6	1/2	3/8	1.00	.562



## MALE REDUCERS

**M** Brass

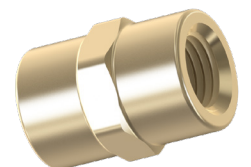
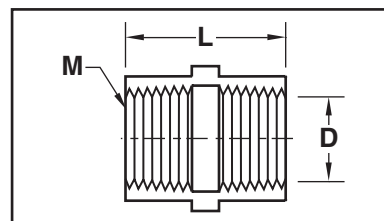
CATALOG NUMBER	M NPT	P NPT	L	D
MR18-1	1/8	1/16	1.19	.187
MR14-2	1/4	1/8	1.22	.220
MR38-4	3/8	1/4	1.41	.314
MR50-6	1/2	3/8	1.62	.440



## COUPLINGS

**M** Brass

CATALOG NUMBER	M NPT	L	D
C18	1/8	.75	.328
C14	1/4	1.12	.422
C38	3/8	1.12	.562
C50	1/2	1.50	.688



## HEX NIPPLES

**M** Brass

CATALOG NUMBER	M NPT	HEX SIZE	L
HN18	1/8	7/16	.969
HN14	1/4	9/16	1.375
HN38	3/8	11/16	1.437
HN50	1/2	7/8	1.813

