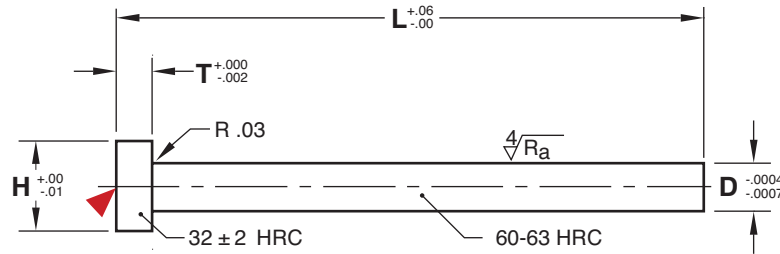


# EJECTOR PINS

## M-2: STRAIGHT-INCH STANDARD



**M** M-2 **H** 60-63 HRC

CAD insertion point

D NOMINAL DIAMETER	H	T	L=3"	L=6"	L=10"	L=14"	L=18"
1/32	.25	.125	EPM031L3	EPM031L6	—	—	—
3/64	.25	.125	EPM047L3	EPM047L6	—	—	—
1/16	.25	.125	EPM062L3	EPM062L6	EPM062L10	—	—
5/64	.25	.125	—	EPM078L6	—	—	—
3/32	.25	.125	EPM094L3	EPM094L6	EPM094L10	—	—
7/64	.25	.125	—	EPM109L6	—	—	—
1/8	.25	.125	EPM125L3	EPM125L6	EPM125L10	EPM125L14	—
9/64	.25	.125	—	—	EPM141L10	—	—
5/32	.28	.156	EPM156L3	EPM156L6	EPM156L10	EPM156L14	—
11/64	.34	.187	—	—	EPM172L10	—	—
3/16	.37	.187	EPM187L3	EPM187L6	EPM187L10	EPM187L14	—
13/64	.37	.187	—	—	EPM203L10	—	—
7/32	.40	.187	EPM219L3	—	EPM219L10	EPM219L14	—
1/4	.43	.187	EPM250L3	EPM250L6	EPM250L10	EPM250L14	EPM250L18
9/32	.43	.250	EPM281L3	—	EPM281L10	—	—
5/16	.50	.250	EPM312L3	EPM312L6	EPM312L10	EPM312L14	EPM312L18
11/32	.56	.250	EPM344L3	—	EPM344L10	—	—
3/8	.62	.250	EPM375L3	EPM375L6	EPM375L10	EPM375L14	EPM375L18
1/2	.75	.250	EPM500L3	—	EPM500L10	EPM500L14	—

### APPLICATION GUIDELINES

- Ideal for forming contours with high surface finish requirements.
- Tolerance by head is +000/-0.001 a maximum of .25" for 3" long pins and 1" for 6" and longer pins.

### ALTERNATIVE CONFIGURATIONS AVAILABLE

- To order pins with the keys tangent to the diameter, add "-K" to the end of the catalog number. Ex. EPM250L10-K.
- Mold-Ready Ejector Pins can be supplied cut-to-length, keyed, and/or engraved or with Black Nitride. Refer to page A-20 and [procomps.com/mold-ready](http://procomps.com/mold-ready) for more information.
- Made-to-order Pins can be quoted using the templates at [procomps.com](http://procomps.com).