

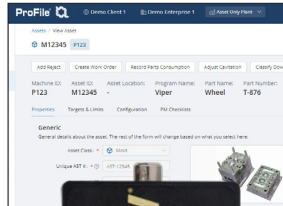


## PROFILE MAINTENANCE MANAGEMENT

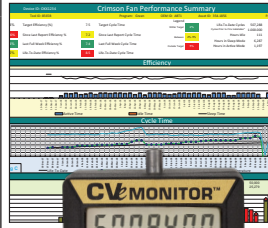
Asset Mgt.  
Page F-6



CounterViews  
Page F-10



CVe OnDemand  
Page F-7



CVe Real-Time  
Page F-2



QR Code for GPS Location	X			X
Asset Management	X	X	X	X
Preventive Maintenance, Work Order and Spare Parts Management	X		X	X
Real-Time Data				X
Cloud-Based File Sharing		X	X	X
Customizable Dashboards				X
APIs for Data Sharing With ERP/MES Systems				X
Multilingual options available	X		X	X
Requires PC-Based Software			X	
Collects Cycle Counts		X	X	X
Historical Data Reporting				X
Mobile App Compatible	X			X

1. Start with any platform based on your timeline, budget and/or resources. Contact [SystemMonitoring@procomps.com](mailto:SystemMonitoring@procomps.com) to learn what platform is best for you and your customers.
2. Build and add additional systems at your own pace with various levels of visibility.
3. Progressive Components' Global Team will provide assistance and support from installation to production.

# CVe MONITOR® RT

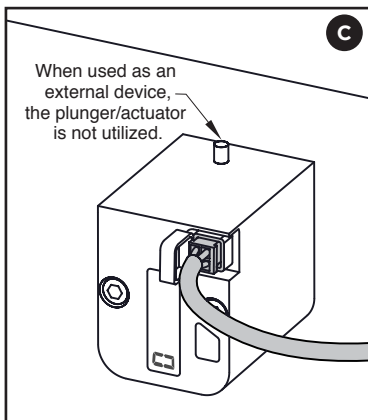
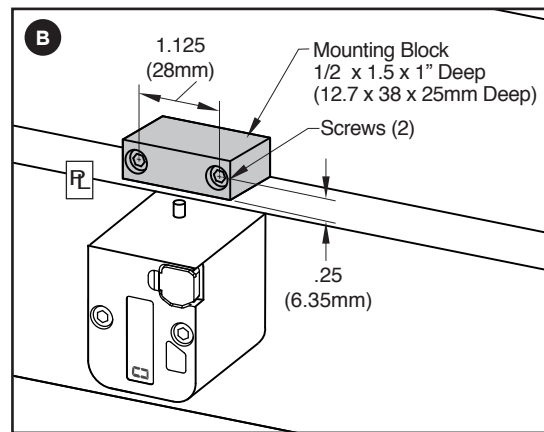
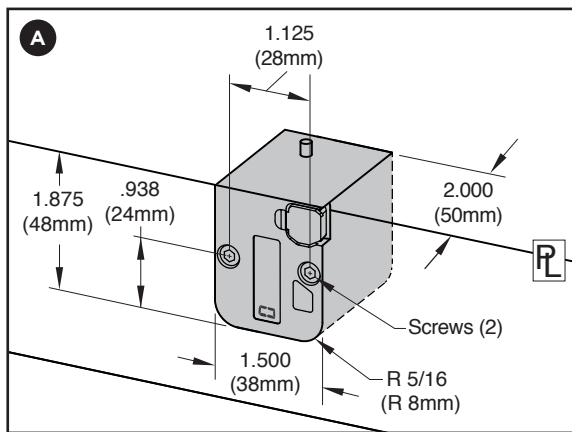
## REAL-TIME MOLD MONITORING



### APPLICATION GUIDELINES

- Progressive's Real-Time CVe Monitor tracks tool activity, allowing users to view the tool's cycle count on the display while also wirelessly sending data to the cloud.
- The QR code and unique serialization on every monitor aligns to a specific tool via the ProFile Real-Time Monitoring System (page F-3) and OnDemand App (page F-9).
- Includes two replaceable batteries.
- Display orientation can change on the device for either A side or B side installation. Water resistant with an ingress protection rating of IP52.
- Maximum temperature: 190°F (90°C).

### MOUNTING OPTIONS



<b>Parting Line Mount</b>	<b>A</b>	Parting line mount makes unit visible to operator. Display orientation can be changed by pressing the button on the face.
<b>External Mount</b>	<b>B</b>	No pocket machining necessary. Designed specifically for retrofit applications. Order the CVE-RT and the CVE-EXT Block as shown below.
<b>Non-Mold Use</b>	<b>C</b>	The CVe Monitor can be wired to a PLC or other modules to act as a switch, not requiring any activation via an open/close event. See page F-4 for cable options.

CATALOG NUMBER	DESCRIPTION
<b>CVE-RT</b>	Real-Time CVe Monitor including #8-32 x 2" SHCS (2) and M4 x 50mm SHCS (2)

CATALOG NUMBER	DESCRIPTION
<b>CVE-EXT</b>	External Mounting Block including #8-32 x 1" SHCS (2) and M4 x 25mm SHCS (2)