

CVe LIVE®

For real-time monitoring of tools, Progressive provides hardware and website access for OEMs and molders utilizing the CVe Monitors.

Features:

- Utilizes FCC and CE certified internal components.
- Press Modules act as a node on a network, reducing the distance required in the plant for data submission to the Gateway.
- Radio Frequency (RF) antennas are interference-free in typical molding environments.
- Designated website for data collection, reporting, and file storage.



HARDWARE



Press Module

- 1 per press connects to the CVe Monitor via cables
- Power supply (US/International) included
- Sends data to the Gateway continuously
- Serves as a node on the network for tools running with a CVe Monitor
- Includes (1) CVEL-DATA9 Cable

Gateway

- 1 per facility collects data from all press modules installed via RF transmissions
- Accesses the internet via cellular technology
- Sends data to the customer's web portal every 15 minutes



REMOTE VALIDATION

Using the CVe Live website interface, the Remote Validation Kit eliminates the need to travel to mold trials and qualifications to gather information. Real-time data is available by connecting the portable system to the CVe Monitor on the mold.

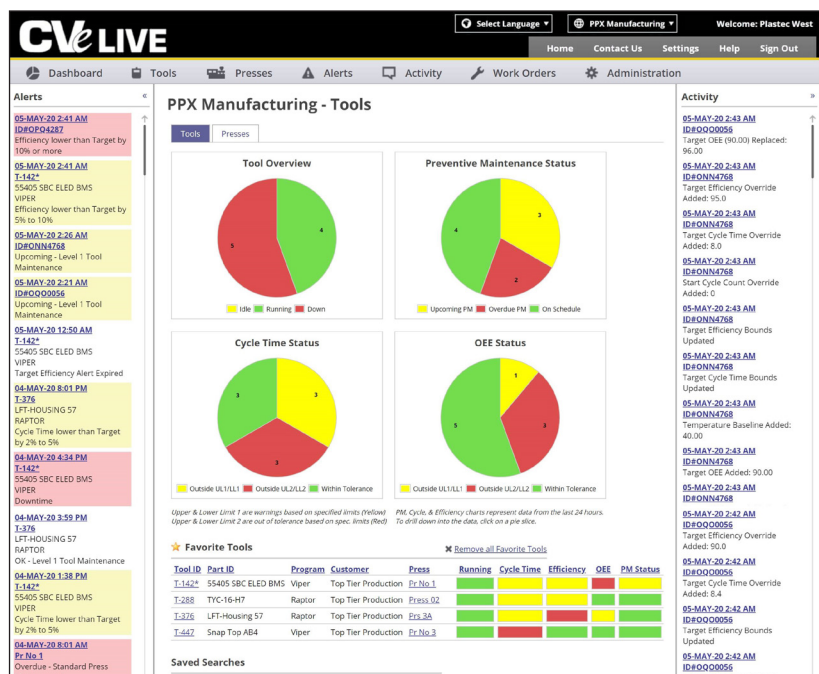
- Can be easily moved between sites as qualifications dictate.
- Reduces or eliminates travel to mold qualifications.
- Users can upload and share files or documents including mold validation data, part drawings, process sheets, and quality inspection reports with global access.
- Monitor critical KPIs without being onsite.
- Generate real-time graphs and reports.
- Includes all hardware, antennas, and cables in a sturdy case. CVe Monitors and Tablets are sold separately.

Contact Customer Service for a CVe Live or Remote Validation Kit quotation.



**CvE Live Website Features:**

- Secure access for OEMs and molders.
- The Tool Dashboard gives users information at either the enterprise or plant level and allows for drill down into specifics on each tool.
- A Press Dashboard provides an overview of the status of every press and the tools that are running within them.
- Users can mark favorites and also save searches for monitoring specific programs or suppliers.
- Graphs include cycle times, efficiencies, cavitation, production loss, and preventive maintenance.
- Plant exceptions screen shows any out-of-tolerance conditions.
- PM Function allows for user-defined PM intervals. Users can create or customize PM forms and checklists for a specific maintenance program.
- Work Order function allows users to create work orders for molds, machines, or other assets.
- OEE is calculated for both the press and the tool. This allows tooling and manufacturing operations to have separate OEE calculations to distinguish between equipment and tooling issues.
- GPS tracking allows for users to view the location of all tools by scanning a QR code using a GPS-enabled device. This feature is ideal for managers that are tracking multiple facilities or global operations. (Asset Tags sold separately on page F-7.)
- Administration and security levels are controlled by the user, and access can be customized for various roles.
- The file cabinet system is designed to store reports, tool and part drawings, and set-up sheets and can be utilized by customers with the CvE Live access.
- Automated Data Exporter allows users to schedule data exports. Data will automatically download to a specified location, in Excel or JSON format, where it can then be imported to other in use systems.
- User-defined fields make customizing data simple for Tools, Presses, and Assets.

**ID #OPQ7500**
[★ Remove from Favorites](#) [View 1 Open Work Order](#)
[Reject](#) [Downtime](#) [Work Order](#) [Parts Consumed](#) [Maintenance](#) [Cavitation](#)

Tool Owner: Engineer: Cavitation: of

OEM ID: Processor: Starting Cycle Count:

Asset ID: Tool Type: Last Cycle Count:

Tool Builder: Temperature: Cycles Until PM:

Location: Firmware: Last 50 Cycles Avg (s):

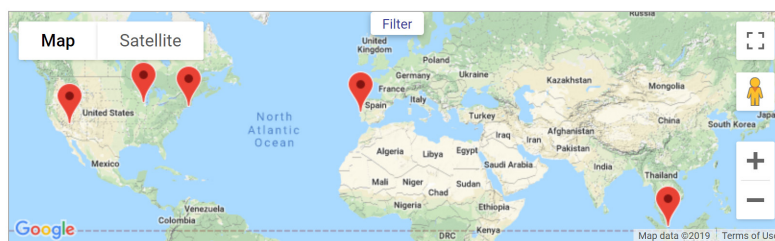
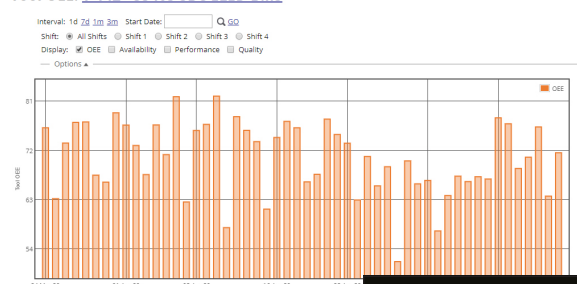
Last Connect: Rejects Today: Downtime Today:

Tool ID: Target Efficiency: Alert Temp: °C

Program Name: Target Cycle Time:

Part ID: Idle Threshold (s):

Customer: Sleep Threshold (m):

**Tool OEE: T-142 - 55405 SBC ELED BMS**

Reports

- Tool Summary
- Tool Connection History
- Historical PM

Logs

- Activity
- Alerts
- Parts Consumed
- Work Orders

File Cabinet

Press Documents

Press PM Reports

CvE LIVE

All Plants

Welcome to CvE Live

Home

Contact Us

Settings

Help

Sign Out

Dashboard

Tools

Presses

Alerts

Activity

Work Orders

Administration

Tools

Export

Select Via Search

Select Via Saved Search

Select devices below before you

Select one

Click column name to sort. Define default columns in SETTINGS.

Save This Search for Later

ALL	TOOL ID	DEVICE ID	CURRENT COUNT	TARGET EFFICIENCY %	1 WEEK EFFICIENCY	24 HR EFFICIENCY	1 HR EFFICIENCY	1 WEEK CYCLE AVG	24 HR CYCLE AVG	1 HR CYCLE AVG	PRODUCTION BY SHIFT 1	PRODUCTION BY SHIFT 2	CYCLES UNTIL PM	NEXT PM NAME	LAST PM	LAST PM DATE	LIFETIME MAX TIME	24 HR MAX TIME
	OPQ20037	4913	90.0	95.0	95.0	95.0	100.0	16.2	16.2	16.8		95,087	Preventive Maintenance				26.00	26.00
	T-142*	OPQ2500	1,151,808	90.0	79.0	81.0	90.0	7.2	7.2	7.2	72,464	82,928	-25,736	Level 1 Tool Maintenance		1,151,760	23-SEP-19	73.00
	T-167	OPQ6500	57,281	90.0	91.0	86.0	100.0	10.3	9.8	7.4		856	Level 1 Tool Maintenance		48,137	26-AUG-19	86.00	77.00
	T-288	OPQ9500	62,910	90.0	99.0	99.0	100.0	166.3	165.8	165.4	262	258	8,016	Level 1 Tool Maintenance		60,926	19-SEP-19	41.00
	T-325*	OPQ7500	76,512	90.0	66.0	64.0	53.0	7.2	7.2	7.2			-16,512	Level 2 Tool Hot Runner Maintenance		62,166	26-AUG-19	73.00
	T-376	OPT5500	138,991	90.0	98.0	98.0	100.0	54.5	54.9	53.8	1,548	1,538	4,032	Level 1 Tool Maintenance		133,023	19-SEP-19	66.00