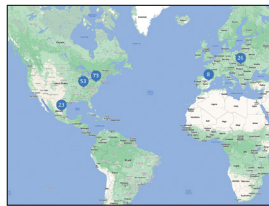


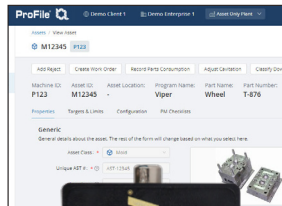


PROFILE MAINTENANCE MANAGEMENT

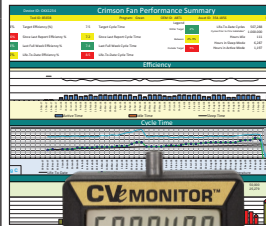
Asset Mgt.
Page F-6



CounterViews
Page F-10



CVe OnDemand
Page F-7



CVe Real-Time
Page F-2



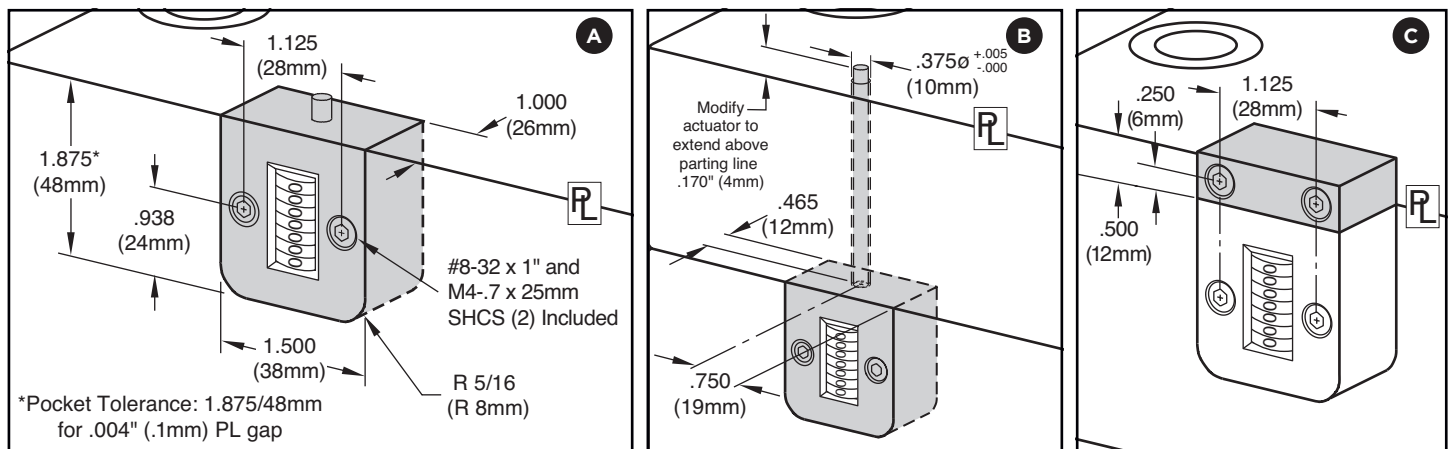
QR Code for GPS Location	X			X
Asset Management	X	X	X	X
Preventive Maintenance, Work Order and Spare Parts Management	X		X	X
Real-Time Data				X
Cloud-Based File Sharing		X	X	X
Customizable Dashboards				X
APIs for Data Sharing With ERP/MES Systems				X
Multilingual options available	X		X	X
Requires PC-Based Software			X	
Collects Cycle Counts		X	X	X
Historical Data Reporting				X
Mobile App Compatible	X			X

1. Start with any platform based on your timeline, budget and/or resources. Contact SystemMonitoring@procomps.com to learn what platform is best for you and your customers.
2. Build and add additional systems at your own pace with various levels of visibility.
3. Progressive Components' Global Team will provide assistance and support from installation to production.

COUNTERVIEW® S-SERIES



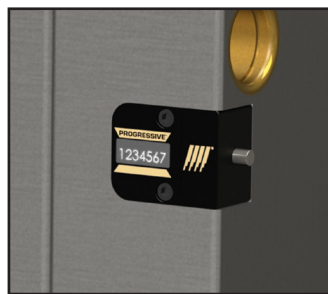
M Glass-filled Nylon housing



Mounting Options

Parting Line Mount	A	Parting line mount makes unit easily visible to operator.
Internal Extension Mount	B	Machinable 8" (200mm) included extension rod allows installation in support plate or rail. Not available for High Temp CounterViews.
External Mount	C	No pocket machining necessary. Designed specifically for retrofit applications. Order the Parting Line Mount and the CVE-EXT Block as shown below.

Operator Side: Movable Half / B Side



Operator Side: Stationary Half / A Side



CATALOG NUMBER	VERSION & MOUNTING STYLE
CVPL-B	Standard: Parting Line
CVIN-B	Standard: Internal Extension
CVPLHT-B	High Temp: Parting Line

Screws included.

CATALOG NUMBER	VERSION & MOUNTING STYLE
CVPL-A	Standard: Parting Line
CVIN-A	Standard: Internal Extension
CVPLHT-A	High Temp: Parting Line

Screws included.

ACCESSORIES



CATALOG NUMBER	DESCRIPTION
CVE-EXT	External Mounting Block including #8-32 x 1" (2) and M4 x 25mm screws (2)
CVID	ID Plate for CounterView