



## PROFILE MAINTENANCE MANAGEMENT

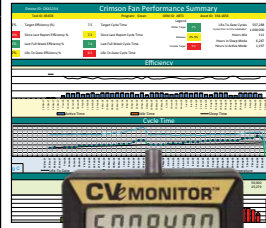
Asset Mgt.  
Page F-6



CounterViews  
Page F-10



CVe OnDemand  
Page F-7



CVe Real-Time  
Page F-2



QR Code for GPS Location	X			X
Asset Management	X	X	X	X
Preventive Maintenance, Work Order and Spare Parts Management	X		X	X
Real-Time Data				X
Cloud-Based File Sharing		X	X	X
Customizable Dashboards				X
APIs for Data Sharing With ERP/MES Systems				X
Multilingual options available	X		X	X
Requires PC-Based Software			X	
Collects Cycle Counts		X	X	X
Historical Data Reporting				X
Mobile App Compatible	X			X

1. Start with any platform based on your timeline, budget and/or resources. Contact [SystemMonitoring@procomps.com](mailto:SystemMonitoring@procomps.com) to learn what platform is best for you and your customers.
2. Build and add additional systems at your own pace with various levels of visibility.
3. Progressive Components' Global Team will provide assistance and support from installation to production.



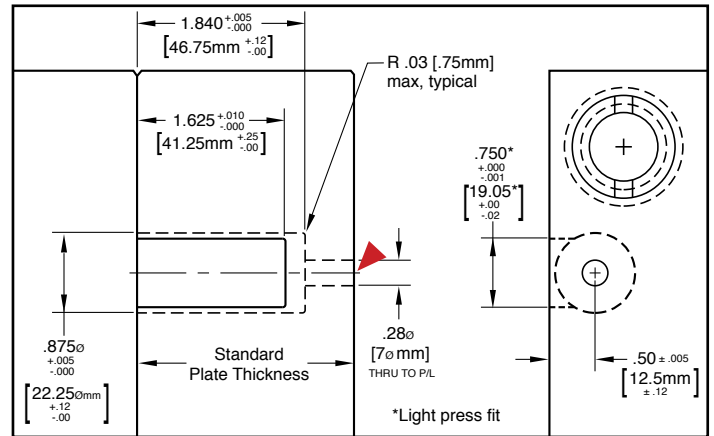
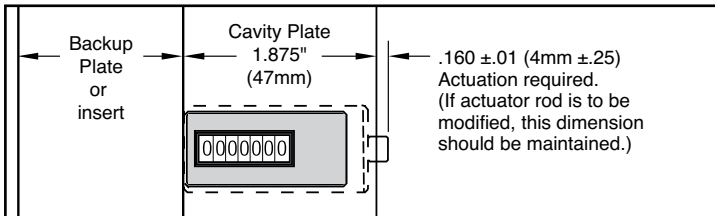
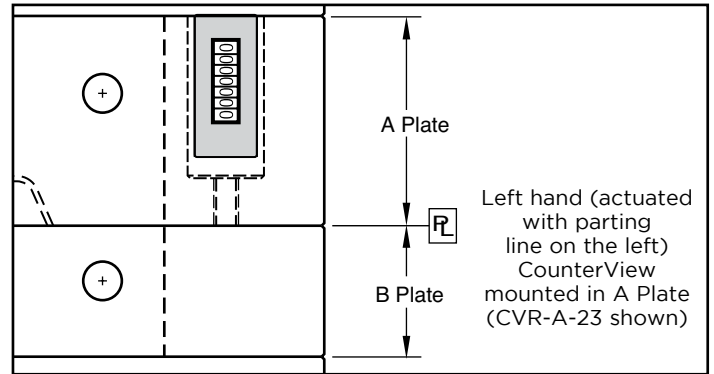
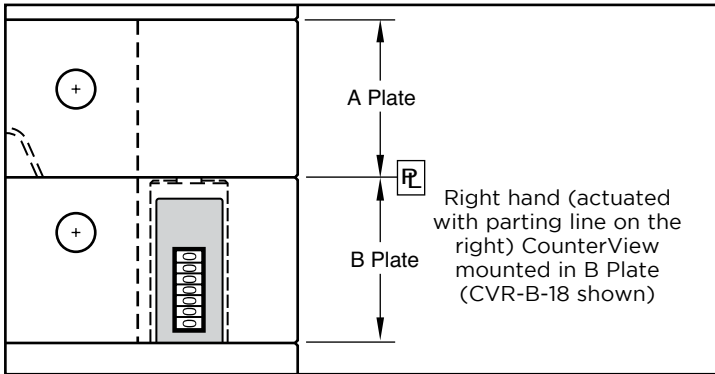
# COUNTERVIEW® R-SERIES

## APPLICATION GUIDELINES

- Counter: Non-resettable mechanical, 7-digit
- Available for installation on the movable or stationary halves and with extensions.
- Maximum operating temperature is 250°F (120°C). For heat protection, refer to the Insulator available on page F-12.
- CounterViews can be ordered pre-set to a specific cycle count. Contact Customer Service for more information.



### M Glass-filled Nylon housing



The R-Series CounterView can be installed in the A or B plates with a minimum thickness of 1.875" (47mm). Larger plates utilize a threaded rod (included with each) that is pre-machined to the appropriate length for standard plate thicknesses to provide consistent actuation.

### Operator Side: Movable Half / B Side



### Operator Side: Stationary Half / A Side



#### Inch Standard

CATALOG NUMBER	NOMINAL PLATE THICKNESS
CVR-B-18	1.875
CVR-B-23	2.375
CVR-B-28	2.875
CVR-B-33	3.375
CVR-B-38	3.875
CVR-B-43	4.375
CVR-B-83	8.375

#### Metric Standard

CATALOG NUMBER	NOMINAL PLATE THICKNESS
CVR-B-56	56
CVR-B-66	66
CVR-B-76	76
CVR-B-96	96
CVR-B-116	116
CVR-B-196	196

#### Inch Standard

CATALOG NUMBER	NOMINAL PLATE THICKNESS
CVR-A-18	1.875
CVR-A-23	2.375
CVR-A-28	2.875
CVR-A-33	3.375
CVR-A-38	3.875
CVR-A-43	4.375
CVR-A-83	8.375

#### Metric Standard

CATALOG NUMBER	NOMINAL PLATE THICKNESS
CVR-A-56	56
CVR-A-66	66
CVR-A-76	76
CVR-A-96	96
CVR-A-116	116
CVR-A-196	196

Each R-Series CounterView includes the actuator. All except CVR-B-18 and CVR-A-18 require attachment of the actuator rod to the threaded CounterView unit.