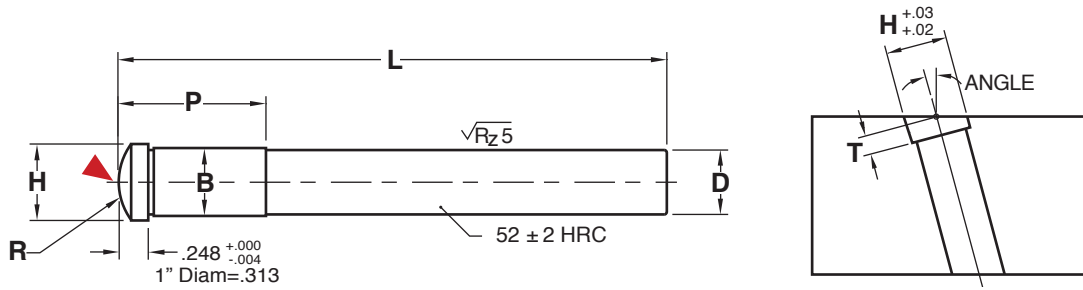
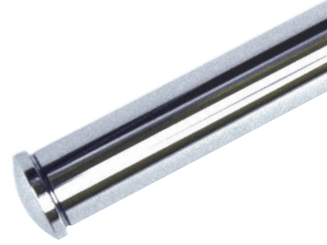




# ANGLE PINS

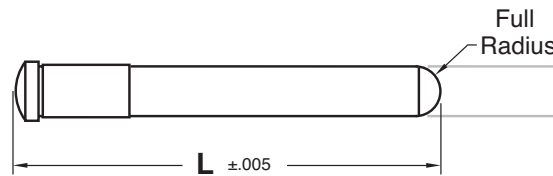


**M** 8620 **H** Surface: 50-54 HRC

CAD insertion point

NOMINAL DIAMETER	CATALOG NUMBER	D +.0000 -.0005	L +1/8 -0	B +.0005 -.0000	H +.000 -.010	R HEAD RADIUS	P PRESS FIT LENGTH	ANGLE	T DEPTH
3/8	AP375L6	.374	6	.376	.500	.375	.75	10°	.258
			10					15°	.265
	AP375L10		1.25					20°	.276
1/2	AP500L6	.499	6	.501	.625	.500	.75	25°	.291
			10					10°	.260
	AP500L10		1.25					15°	.270
5/8	AP625L6	.624	6	.626	.750	.625	.75	20°	.284
			10					25°	.304
	AP625L10		1.25					10°	.262
3/4	AP750L10	.749	10	.751	.875	.750	1.25	15°	.274
			14					20°	.292
	AP750L14		1.25					25°	.316
1	AP1000L10	.999	10	1.001	1.118	1.000	1.31	10°	.264
			14					15°	.278
	AP1000L14		1.31					20°	.300
								25°	.329
									.332
									.352
									.381
									.420

## MOLD-READY ANGLE PINS



**To Order:**

- A full radius option can be ordered by specifying the prefix of "APR" and the diameter as outlined above, plus "L" and the length required.
- Example: APR625L7.244 (no dashes/spaces) is an Angle Pin with a 5/8" diameter machined to 7.244" long with a full radius.
- Note: P will remain as shown in table above.

