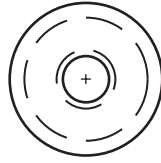


# THREADLESS PLUGS

## PUSH-IN O-RING PLUGS

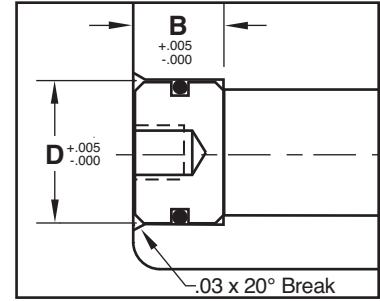
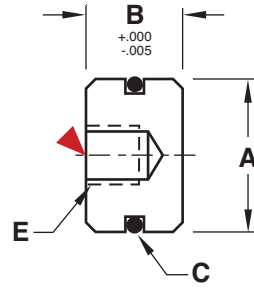


**M** Brass with Buna O-Rings

Maximum temp: 250° F (120° C)

CATALOG NUMBER	A	B	C O-Ring	D Ream Size	E
TWP281	.273	.250	1/16	.281	#6-32
TWP375	.366	.312	1/16	.375	#10-32
TWP500	.494	.312	1/16	.500	#10-32
TWP625	.618	.437	3/32	.625	1/4-20
TWP750	.743	.500	3/32	.750	1/4-20
TWP1000	.990	.625	1/8	1.000	3/8-16
TWP1187	1.177	.625	1/8	1.187	3/8-16

CAD insertion point

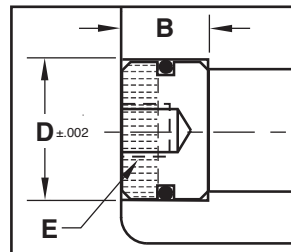


Threadless O-Ring Plugs are designed for inserts backed up by mold steel.

### Alternative configurations and materials available:

- For plugs with Viton O-rings (maximum temperature 400° F, 200° C) specify "-V" at the end of the catalog number. Ex. TWP500-V
- For stainless steel threadless plugs, specify "-SS" at the end of the catalog number. Ex. TWP500-SS or TWP281-SS-V for stainless plugs with Viton O-rings

## TAP-IN O-RING PLUGS



Tap-In O-Ring Plugs do not require steel back up.

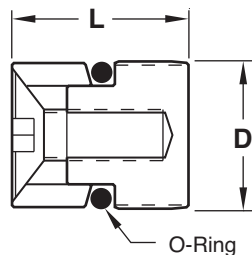
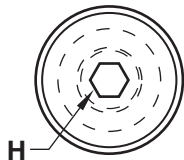
**M** Brass with Buna O-Rings

CATALOG NUMBER	Nominal Pipe Size	D Ream Diam.	B Depth +.005 / -.000	E
TAP281	1/16	.281	.312	#6-32
TAP375	1/8	.375	.312	#10-32
TAP500	1/4	.500	.375	1/4-20
TAP625	3/8	.625	.437	5/16-18
TAP750	1/2	.750	.500	5/16-18

### Alternative configurations and material available:

- For plugs with Viton O-rings (maximum temperature 400° F, 200° C) specify "-V" at the end of the catalog number. Ex. TAP375-V

## THREADLESS DIVERTING PLUGS



**M** Brass with Buna O-Rings

Maximum pressure: 70 psi

CATALOG NUMBER	Nominal Pipe Size	D Drill Size	H	L
TDP12	1/8	11/32	5/64	.50
TDP12-OS	1/8	23/64	5/64	.50
TDP25	1/4	7/16	1/8	.56
TDP25-OS	1/4	29/64	1/8	.56
TDP37	3/8	9/16	1/8	.62
TDP37-OS	3/8	37/64	1/8	.62
TDP50	1/2	11/16	1/8	.62
TDP50-OS	1/2	45/64	1/8	.62

### Alternative configurations and material available:

- For plugs with Viton O-rings (maximum temperature 400° F, 200° C) specify "-V" at the end of the catalog number. Ex. TDP50-V or TDP50-OS-V