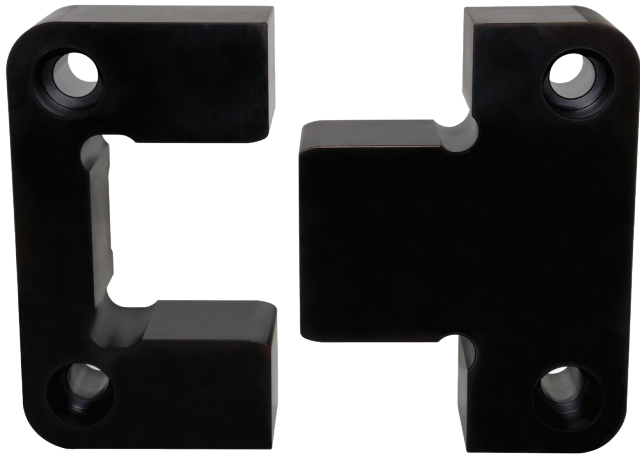
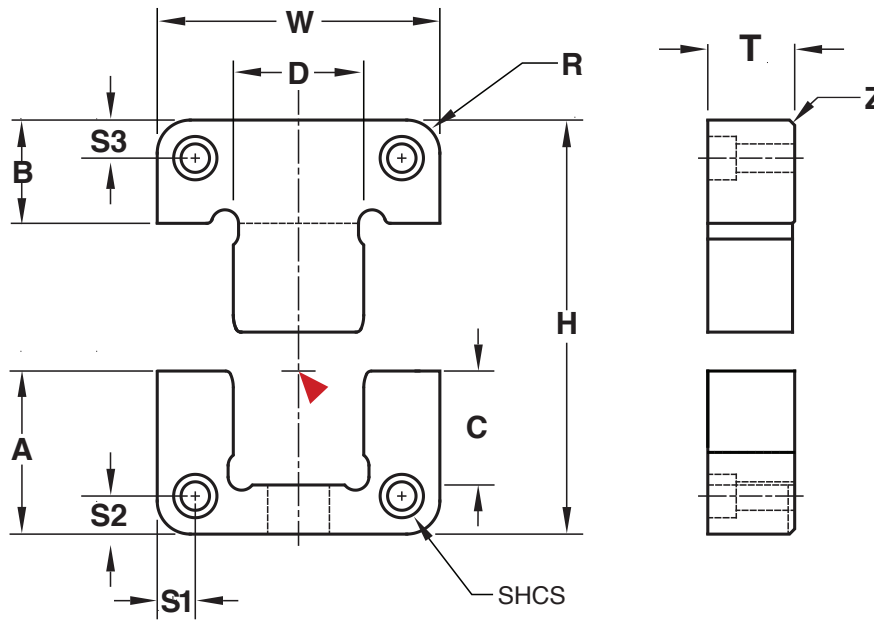


SIDE LOCKS

BLACK NITRIDE SERIES



Progressive's Die Cast Side Locks are sized for resistance to deflection, and the large landing area improves casting precision.



M H-13 **H** Core: 42-48 HRC, Surface: 66-70 HRC **S** Black Nitride (SBN)

CATALOG NUMBER	T +.000 -.002	W +.0000 -.0004	A +.000 -.002	B +.000 -.002	C	D .0004/.001 Clearance Per Side	H +.000 -.004	R Pocket Radius	S1/S2/S3 ±.01	Z Chamfer	SHCS
SL200X650-BN	2.000	6.500	3.750	2.374	2.62	3.000	6.125	.750	.875	.12	5/8-11 x 2.25"

▶ CAD insertion point

Screws included.