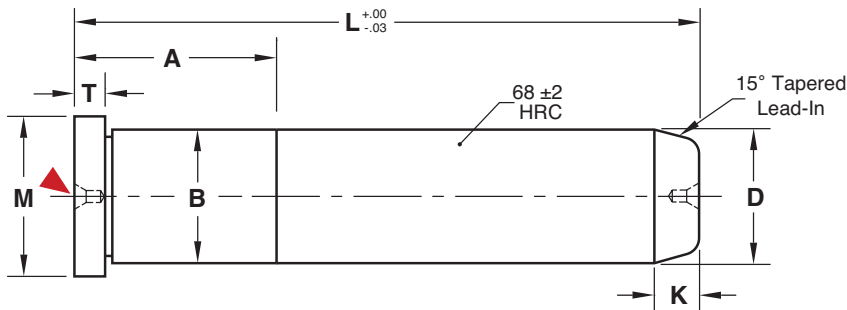


# LEADER PINS

## INCH STANDARD-BLACK NITRIDE



Progressive's Black Nitride Leader Pins are engineered to maximize performance in greaseless and medical applications and in die cast dies.



### General Dimensions

Nominal Diameter	D ±.0005	M +.00 -.01	T +.000 -.002	B +.0005 -.0000	K
1	.999	1.240	.250	1.001	3/16
1-1/4	1.249	1.490	.312	1.251	1/4
1-1/2	1.499	1.740	.312	1.501	1/4
2	1.999	2.240	.312	2.001	1/2
2-1/2	2.499	2.740	.312	2.501	1/2
3	2.999	3.365	.500	3.001	1/2

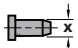
▶ CAD insertion point

**M** AISI 1117   **H** Surface: 66-70 HRC   **S** Black Nitride

L	D=1"		D=1-1/4"		D=1-1/2"		D=2"		D=2-1/2"		D=3"	
	A	Catalog Number	A	Catalog Number	A	Catalog Number	A	Catalog Number	A	Catalog Number	A	Catalog Number
7-1/4	1-7/8	LP100L7.25-BN	—	—	—	—	—	—	—	—	—	—
7-3/4	1-7/8	LP100L7.75-BN	1-7/8	LP125L7.75-BN	1-7/8	LP150L7.75-BN	1-7/8	LP200L7.75-BN	—	—	—	—
8-1/4	—	—	1-7/8	LP125L8.25-BN	—	—	—	—	—	—	—	—
8-3/4	—	—	—	—	1-7/8	LP150L8.75-BN	1-7/8	LP200L8.75-BN	2-3/8	LP250L8.75-BN	2-7/8	LP300L8.75-BN
9-3/4	—	—	—	—	—	—	1-7/8	LP200L9.75-BN	2-3/8	LP250L9.75-BN	—	—
10-3/4	—	—	—	LP125L10.75-BN	—	LP150L10.75-BN	—	LP200L10.75-BN	—	LP250L10.75-BN	2-7/8	LP300L10.75-BN
12-3/4	—	—	—	—	—	—	—	—	—	—	2-7/8	LP300L12.75-BN
15-3/4	—	—	—	—	—	—	1-7/8	LP200L15.75-BN	2-3/8	LP250L15.75-BN	—	—
18-3/4	—	—	—	—	—	—	2-3/8	LP200L18.75-BN	2-3/8	LP250L18.75-BN	2-7/8	LP300L18.75-BN

### Alternate Configurations Available:

- For Inch standard Leader Pins, refer to page B-6.
- For Leader Pins with a 7/8" press fit for guided ejection applications, please refer to page B-8.
- For DIN standard Leader Pins, refer to page B-7.
- Any standard Leader Pin can be treated with Black Nitride. Add -BN to the catalog number and contact Customer Service for a quotation.

 For custom pins, refer to the templates in section X.