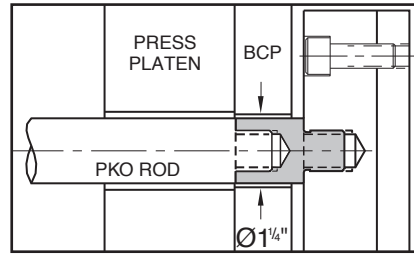
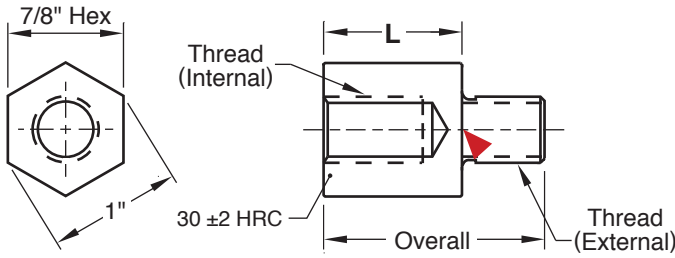




PKO™ EXTENSIONS

HEX SERIES



M AISI 4140 Pre-Hard **H** 28-32 HRC **S** Black Oxide

▶ CAD insertion point

CATALOG NUMBER	Internal Thread	External Thread	Overall	L
PH37L10	3/8-16	3/8-16	1.672	1.052
PH50L10	1/2-13	1/2-13		
PH62L10	5/8-11	5/8-11	1.922	
PH62L10-50	1/2-13	5/8-11		
PH75L10	3/4-10	3/4-10		
PH75L10-NT	N/A	3/4-10		
PH37L13	3/8-16	3/8-16	1.922	1.302
PH50L13	1/2-13	1/2-13		
PH62L13	5/8-11	5/8-11	2.172	
PH62L13-50	1/2-13	5/8-11		
PH75L13	3/4-10	3/4-10		
PH75L13-NT	N/A	3/4-10		

CATALOG NUMBER	Internal Thread	External Thread	Overall	L
PH37L15	3/8-16	3/8-16	2.172	1.552
PH50L15	1/2-13	1/2-13		
PH50L15-NT	N/A	1/2-13	2.422	
PH62L15	5/8-11	5/8-11		
PH75L15	3/4-10	3/4-10		
PH75L15-NT	N/A	3/4-10		
PH37L18	3/8-16	3/8-16	2.422	1.802
PH50L18	1/2-13	1/2-13		
PH50L18-NT	N/A	1/2-13	2.672	
PH62L18	5/8-11	5/8-11		
PH75L18	3/4-10	3/4-10		
PH75L18-NT	N/A	3/4-10		

"L" DIMENSIONS:

1.052 = .875 (BCP) + .187 (Stop Pins) - .010
 1.302 = .875 (BCP) + .187 (Stop Pins) + .250 (Insulator Plate) - .010

"L" DIMENSIONS:

1.552 = 1.375 (BCP) + .187 (Stop Pins) - .010
 1.802 = 1.375 (BCP) + .187 (Stop Pins) + .250 (Insulator Plate) - .010

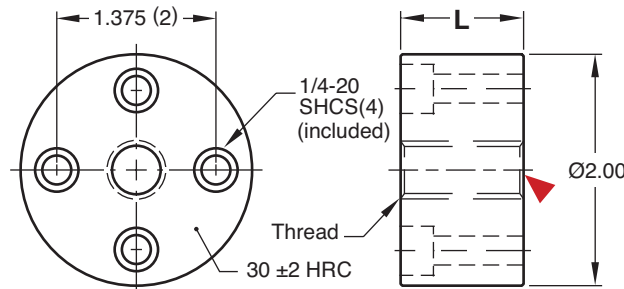
For custom PKO Extensions, refer to the templates in section X.

PKO™ EXTENSIONS

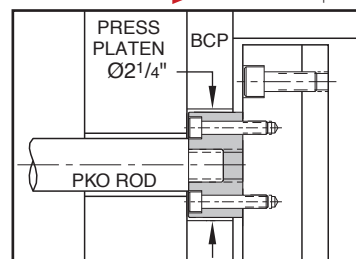
PUCK SERIES

CATALOG NUMBER	Thread Internal & External	L
PKP37L10	3/8-16	1.052
PKP50L10	1/2-13	
PKP62L10	5/8-11	
PKP75L10	3/4-10	
PKPL10-NT	No Thread*	1.302
PKP37L13	3/8-16	
PKP50L13	1/2-13	
PKP62L13	5/8-11	
PKP75L13	3/4-10	1.552
PKPL13-NT	No Thread*	
PKP37L15	3/8-16	
PKP50L15	1/2-13	
PKP62L15	5/8-11	1.802
PKP75L15	3/4-10	
PKPL15-NT	No Thread*	
PKP37L18	3/8-16	
PKP50L18	1/2-13	1.802
PKP62L18	5/8-11	
PKP75L18	3/4-10	
PKPL18-NT	No Thread*	

M AISI 1018 **S** Black Oxide



▶ CAD insertion point



*Mold maker machines thread on "NT" style to suit non-standard applications.